






Who is covered in Alabama's Medicaid Program?

ELIGIBILITY GROUPS

FFS^{2, 3} PCCM⁴

Dual Eligibles 		Children (0-18 years) [#]
Qualified Non-Citizens* 		Current and Former Foster Care Children
Undocumented Immigrants** 		Parents and other Caretaker Relatives [#]
Incarcerated Individuals*** 		Pregnant Women [#]
		Aged, Blind, and Disabled Adults [#]
		Disabled Children [#]
		Plan First recipients (women ages 19-55 and men 21 and older)
		American Indians/Alaskan Natives

* Subject to a 5-year waiting requirement.
 ** Emergency Medicaid services only.
 *** Inpatient hospital services only.
 # Covered through Primary Care Case Management (PCCM)

Important News

July 2017 - The state Medicaid Agency canceled the RCO program and decided to focus on increasing existing case management through a Primary Care Case Management program (PCCM) instead.⁸

October 2019 - Alabama Medicaid implemented the Alabama Coordinated Health Network program, consisting of seven Primary Care Case Management (PCCM) entities, which aims to coordinate and improve care for all members.



Eligibility Criteria for Specific Populations as a Percentage of the Federal Poverty Level (FPL)¹

Children: 371% Seniors & People with Disabilities: 74%
 Parents: 18% Pregnant women: 146%

Percentage Breakdown of Alabama's Medicaid Population⁹

Adults: 17% Aged: 11% Children: 50% Disabled: 21%

Medicaid Medical Directors Network

Alabama developed an analytics team to implement data-driven approaches in their Medicaid program.

Data driven approaches are being utilized to assess the impact of dental opioid prescriptions on teens and the impact of opioid prescription rates on the occurrence of neonatal abstinence syndrome.



Do Medicaid health plans provide coverage?⁵

YES NO

SECTION 1115 WAIVER

Alabama Plan First Waiver

Provide Medicaid eligibility for limited family planning benefits to eligible women and men.^{6, 7}



Ages 19-55 Age 21+
 (Income at or below 141% FPL)

EFFECTIVE:
10/1/2000

APPROVAL:
7/1/2000

EXPIRATION:
9/20/2022

The Alabama Medicaid Workforce Initiative Provide Medicaid will require able-bodied adults to complete 35 hours a week of employment-related activities. Parents and caretaker relatives with a child under 6 years must participate in 20 hours of employment-related activity. Activities that can fulfill the requirements include employment, on the job training, job search and readiness activities, high school attendance, GED classes, vocational classes, or higher education, volunteer work or technical training. Individuals with disabilities, who are pregnant or receiving postpartum services, are above 60 years of age, care for a disabled child or adult, participate in a substance use treatment program, are enrolled in or exempt from the TANF JOBS program, or are the single custodial parent of a child one year old or younger are exempt from the requirements. Individuals who are noncompliant will be terminated from the Medicaid program after 90 days. As of January 2020, this waiver was pending approval.¹⁰

SUBMITTED: 9/10/2018

How is Alabama meeting the needs of Medicaid enrollees?

Value-Based Healthcare Initiatives

The **Health Homes** program adds additional support to the Alabama Coordinated Health Network (ACHN) by coordinating the care of patients who have or who are at-risk of having certain chronic conditions: asthma, diabetes, cancer, COPD, HIV, mental health conditions, substance use disorders, transplants, sickle cell, BMI>25, heart disease, and hepatitis C. (same source as before). Providers with Patient-Centered Medical Home (PCMH) recognition or certification can receive PCMH Recognition Bonus Patients.^{11,12}

Each PCCM organization in the Alabama Coordinated Health Network is accountable for improving health outcomes and can receive a 10% bonus for performance-based on HEDIS and CMS Quality Measures.¹³



Oral Health

The **Alabama Medicaid Dental Program** covers certain routine preventive and restorative services for children under the age of 21 who are eligible for full Medicaid benefits through fee-for-service.¹⁶ Benefits include checkup and dental cleaning every six months, some crowns, extractions, fillings, root canals, temporomandibular joint surgery and X-rays. Some services must be pre-approved by the state Medicaid office in advance of the service.¹⁷

Children in the Medicaid program can receive case management services from licensed social workers and nurses to promote understanding of the importance of dental health and how to access dental care.¹⁸

The **1st Look Program** aims to reduce early childhood caries by having primary care physicians perform dental risk assessments, apply fluoride when needed, and refer patients to a dental home by one year of age. Children who receive services from a dentist do not qualify for this program.¹⁹



Cost-Sharing

Co-payments range from \$1.30 to \$3.90 for doctor visits, and between 65 cents and \$3.90 for prescription drugs and medical supplies and appliances. A \$50 co-pay is charged for a hospital admission. Services that do not require a co-payment include birth control services, case management, chemotherapy, emergencies, home health care services, mental health and substance abuse treatment services, outpatient physical therapy, radiation treatment, and kidney dialysis, among others. Individuals who are in nursing homes, under age 18, pregnant, or a Native American Indian are exempt from co-pays.²²



Family Planning

Medicaid-eligible women who qualify for pregnancy-related services are covered for family planning services through the end of the month in which the 60th postpartum day falls.¹⁴

Through the Plan First waiver, eligible women receive limited family planning and birth control services. Eligible men are covered for vasectomies. Family planning services for those eligible under the waiver originally provided through the Plan First program are provided through the Alabama Coordinated Health Network.¹⁵



Long-Term Services and Supports (LTSS)

Alabama has a managed fee-for-service (FFS) Long-Term Services and Supports (LTSS) model. The Integrated Care Network (ICN) program provides case management, education, and outreach services to most LTSS recipients in both home and community-based settings (HCBS) and institutional settings. The ICN receives a per-member per-month payment (PMPM), which is dependent upon reaching targets for the ratio of members using nursing facilities to members using HCBS.

This is how the state has built a rebalancing incentive into the program. The state also continues to pay providers on a FFS basis for LTSS and other Medicaid services.²⁰



Children with Special Health Care Needs

Medicaid covers 49% of children with special health care needs in Alabama.²¹



How is Alabama meeting the needs of Medicaid enrollees?

Women's Health

The Baby Comes First program helps pregnant women quit smoking through local smoking cessation educational programs and telephone "Quitlines."²³

Through the Alabama Perinatal Excellence Collaborative, the Alabama Medicaid Maternity Care Program²⁴ aims to lower infant mortality and improve infant and maternal health.²⁵

The Alabama Coordinated Health Network provides maternal health services to pregnant members.²⁸

Medicaid provides coverage for midwifery services through RCOs.^{26, 27}

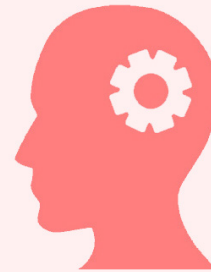


Behavioral Health

Alabama provides mental and behavioral health benefits through RCOs. However, substance use benefits continue to be provided through fee-for-service.²⁹ Benefits include (but are not limited to):³⁰

- Individual, family, and group counseling
- Drug therapies
- Targeted case management
- Child and adolescent mental day treatment
- In-home interventions

In the Alabama Coordinated Health Network program, providers are incentivized to achieve quality goals for members with substance use disorders.³¹



Child and Adolescent Health

In the Alabama Coordinated Health Network program, providers are incentivized to achieve quality goals for childhood obesity and infant mortality.³²

In addition to EPSDT services, Alabama offers intensive home-based services for child members.³³

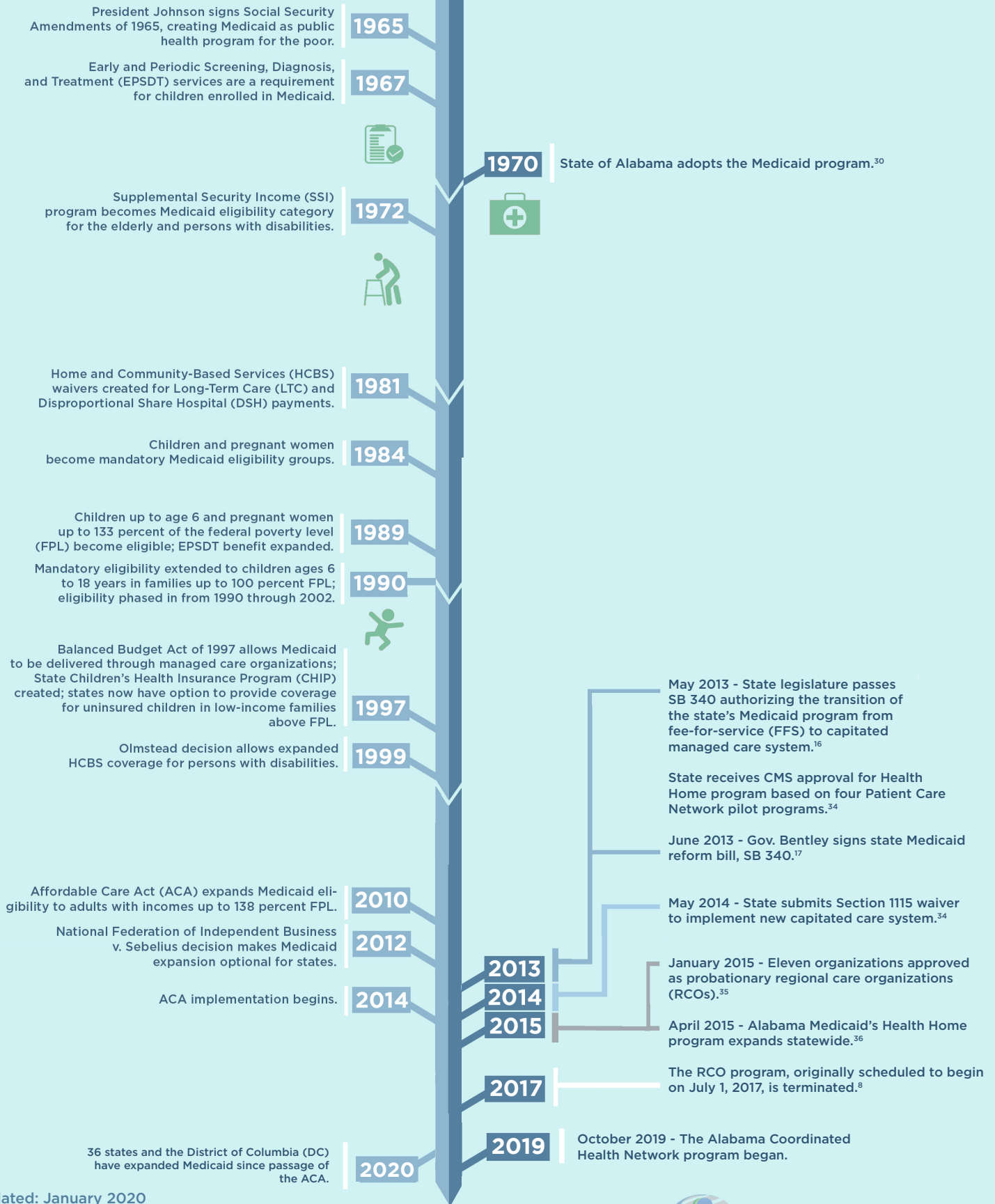




Timeline

Federal

Alabama



Last Updated: January 2020

www.MedicaidInnovation.org

For a complete list of sources, please contact the Institute for Medicaid Innovation at Info@MedicaidInnovation.org



INSTITUTE FOR
MEDICAID INNOVATION