



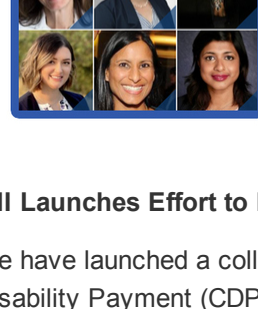
INSTITUTE FOR MEDICAID INNOVATION

The Institute for Medicaid Innovation is excited to share that we are transitioning to a monthly newsletter to keep you up to date on new resources and opportunities. In our August edition, we cover the following topics:

- [Meet IMI's Newest Board Members](#)
- [Modernization of the CDPS Medicaid Risk Adjustment Model](#)
- [New IMI Resources to Support your Medicaid Efforts](#)
- [Join Our Team](#)
- [Register for the ANA's Policy, Innovation & Advocacy Forum](#)

Recent Announcements

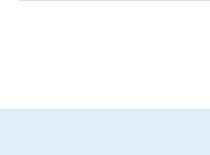
New Board Members Usher in Organizational Growth



We expanded our governing and national advisory board to include the rich experience and perspectives of the organization's stakeholders. These stakeholders span across the Medicaid arena including the managed care industry, clinical groups, patient advocacy organizations, and members of the community with experience utilizing Medicaid's services. Meet the new board members [here](#).

IMI Launches Effort to Modernize Medicaid Risk Adjustment Model

We have launched a collaborative new project to update the Chronic Illness and Disability Payment (CDPS) risk adjustment weights, currently used by 22 state Medicaid programs. Updating the weights through this project has the potential to assist states in more accurately implementing risk adjustment methodologies. Learn more [here](#).



New IMI Resources

Did you miss one of our recently released new resources? Below is a snapshot of our articles, reports, tools, and other resources across several key categories. You can learn more about the mission and vision behind IMI's work [here](#).

COVID-19

- [Recuperative Care & COVID-19 in the Medicaid Population](#)
- [Opportunities to Support Optimal Health for Children in Medicaid Beyond the COVID-19 Pandemic](#)
- [How States Are Facilitating Medicaid Enrollment During COVID-19—And How They Can do Even More](#)
- [Medicaid Enrollment during COVID-19: A Content Analysis of State Actions to Mitigate Barriers](#)

Advancing Health Equity

- [Using Data to Reduce Disparities and Improve Quality](#)
- [Leveraging Value-Based Payment Approaches to Promote Health Equity: Key Strategies for Health Care Payers](#)

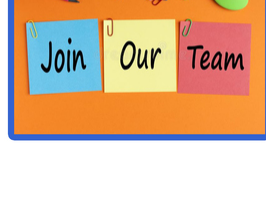
High-Value, Evidence-Based Maternal Models of Care

- [Opportunities for Medicaid Stakeholders to Advance Midwifery-Led Models of Care](#)
- [Opportunities to Advance Midwifery-Led Models of Care: A Checklist for Medicaid Stakeholders](#)

Value of Medicaid Managed Care

- [2020 Medicaid MCO Best Practices and Innovative Initiatives](#)
- [Key Findings from IMI's 2020 Annual Medicaid MCO Survey: SDOH, Women's Health, & Child Health](#)
- [Medicaid Covers Us: Conveying the Value of Medicaid](#)

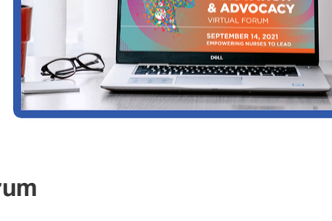
Come Work with Us!



Join the IMI team! IMI has secured funding to expand our maternal health and health equity work. To support these exciting new initiatives, we are looking to hire a [health equity fellow](#), [maternal health research assistant](#), and [research project coordinator](#) to provide support on Medicaid-specific projects related to the mission and strategic priorities of IMI. Learn more about these opportunities [here](#).

On the Virtual Road with IMI

Are you interested in learning more about the work of IMI? Join us **virtually** at one of the many events, meetings, and conferences across the United States! Check out the list of upcoming events below and remember to register.



American Nurses Association: Policy, Innovation, & Advocacy Virtual Forum

September 14, 2021

[Register](#)

The Council of State Government: Medicaid Leadership Academy

September 29- October 1, 2021

[Register](#)

Get Involved!

We have included a summary of the topics and projects that IMI's committees are actively tackling. Are you interested in joining the discussion? Email us at Info@MedicaidInnovation.org.

Dissemination & Implementation Committee

- Best practices in Medicaid managed care.
- Reducing disparities through health system and payment reform.
- COVID-19 vaccine distribution in the Medicaid population.
- Community-based models of care, including community health workers.
- High-value, evidence-based maternal models of care.

Subcommittee on the Health of All Women in Medicaid

- Disparities and state variation in maternal mortality and morbidity.
- High-value, evidence-based maternal models of care.
- Updating the women's health section of the annual Medicaid MCO survey.
- Prenatal and postpartum mood disorders during COVID-19.

Child & Adolescent Health Subcommittee

- Effect of COVID-19 on children's health including a focus on immunization rates and well-child visits.
- State strategies to reduce barriers to children's enrollment in Medicaid.
- Parental mental health including maternal depression, ACEs, and child abuse.
- School-based health centers in Medicaid.
- Behavioral health of school-aged children.
- Youth in the child welfare system.
- Childhood obesity.

Behavioral Health Subcommittee

- Role of technology in improving behavioral care access, coverage, and outcomes.
- Physical and behavioral health integration including value-based payment and high-risk care coordination.
- Substance use disorder.
- Maternal mental health including prenatal mood disorders and postpartum depression.

Data & Research Committee

- Annual Medicaid MCO survey.
- Collection of information related to telehealth, health equity, and structural racism through IMI's annual Medicaid health plan survey.
- Risk adjustment models in Medicaid.
- State Medicaid enrollment form including readability and collection of SDOH data.
- State strategies to facilitate Medicaid enrollment during COVID-19.
- Impact of community health workers and the processes by which they achieve impact.
- Medicaid state facts.

Annual Medicaid MCO Survey Subcommittee

- Annual Medicaid MCO survey.
- Market analysis and benchmarks on Medicaid managed care.
- Trend analysis of Medicaid MCOs, 2016-2020.
- Collection of information related to COVID-19, telehealth, health equity, and structural racism through the survey.

Social Determinants of Health Subcommittee

- Readability and accessibility of the state Medicaid enrollment form.
- Impact of community health workers and the processes by which they achieve impact.
- Impact of COVID-19 on SDOH for Medicaid members and CBOs.
- Role of MCOs in addressing food insecurity for Medicaid members.

Communication Committee

- Collaboration and dissemination efforts of IMI resources.
- Building social media campaign centered on Medicaid enrollees.

It's not the statistics that make Medicaid real.



It's when you love one of the numbers.™

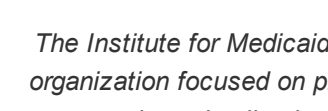
Contact Us

Did you receive this newsletter from a friend? Please email Itkonow@medicaidinnovation.org to be added to our mailing list.

Institute for Medicaid Innovation
P.O. Box 40619
Washington, DC 20016

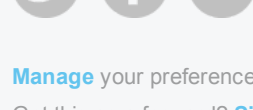
Lydia Tonkonow, MA
Senior Design and Brand Strategist
Itkonow@medicaidinnovation.org

Follow IMI



The Institute for Medicaid Innovation (IMI) is a 501(c)3 nonprofit, nonpartisan research and policy organization focused on providing evidence of innovative solutions that address important clinical, research, and policy issues in Medicaid through multi-stakeholder engagement, research, data analysis, education, learning collaboratives, quality improvement initiatives, and dissemination and implementation activities. IMI is not a membership or trade association and is funded exclusively through research grants and contracts.

Share this email:



Manage your preferences | Opt out using TrueRemove™
Got this as a forward? Sign up to receive our future emails.
View this email online.

P.O. Box 40619
Washington, DC | 20016 US

This email was sent to .
To continue receiving our emails, add us to your address book.



[Subscribe](#) to our email list.