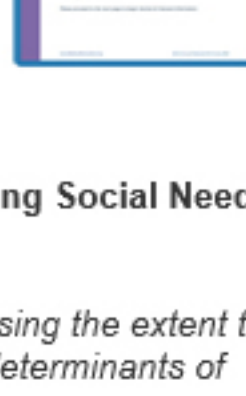




Recent Announcements

2020 Annual Medicaid MCO Survey Release

IMI has released its third annual Medicaid managed care survey for completion by all Medicaid MCOs. The survey is due March 13th. Download the survey [here](#).



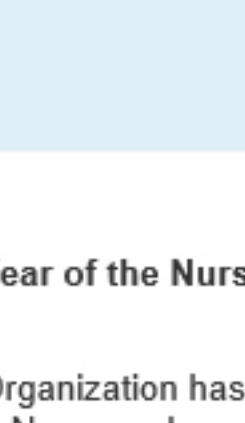
IMI Study Finds that Majority of States are Collecting Social Needs Data as Part of the Medicaid Enrollment Form

IMI released findings from their landmark study assessing the extent to which state Medicaid enrollment forms collect social determinants of health information. Read the report [here](#).



IMI's Newest Fellow to Help Lead Groundbreaking Research into Medicaid Enrollment Forms

IMI is pleased to announce that Rebecca Landucci, MPH, has joined the DC-based team as a health policy and research fellow. She will be continuing IMI's initial work exploring social determinants of health data collection on the state Medicaid enrollment forms by assessing the readability of items. Read more about Landucci [here](#).

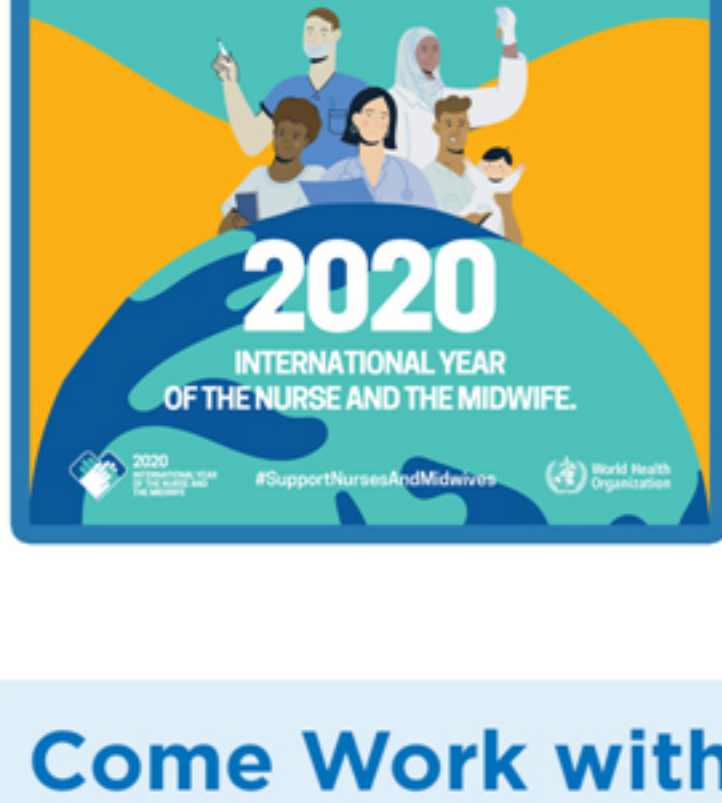


Request for Information

IMI Celebrates the WHO's Year of the Nurse and Midwife

This year, the World Health Organization has named 2020 "The Year of the Nurse and Midwife." In celebration, the Institute for Medicaid Innovation is highlighting nurses and midwives who make a difference in the lives of the Medicaid population; including their families and community.

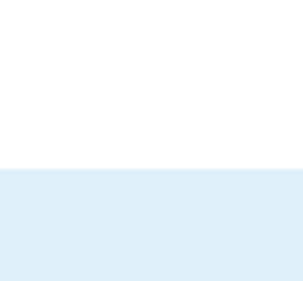
As part of this effort to celebrate the important contribution of these professionals, IMI wants to highlight nurses and midwives who work at Medicaid managed care organizations. If you or someone you know would like to be featured in this initiative, please contact Lydia Tonkonow at ltkonow@medicaidinnovation.org.



Come Work with Us!

IMI Summer Intern Applications are Open!

Applications are being accepted for the summer 2020 intern program! Interns work on a variety of projects focused on Medicaid managed care, disparities, and vulnerable populations. Based on individual goals and interest areas, each internship is a unique experience. Learn more [here](#).



On the Road with IMI

Want to learn more about the work of IMI? Join us at one of the many events, meetings, and conferences across the U.S. Check out the list below and remember to register:

[RWJF Sharing Knowledge Conference \(March 4-6\)](#)

[Aspen Ideas Festival-Health \(June 24-27\)](#)

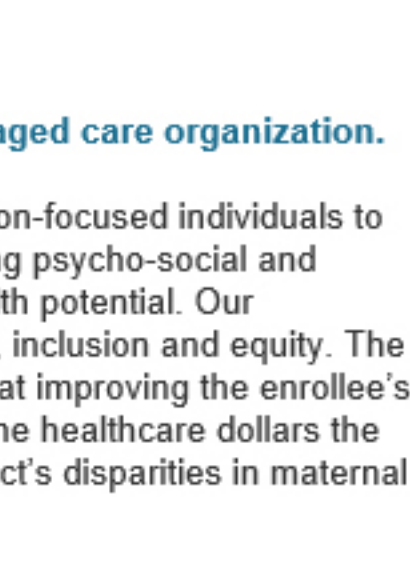
[MHPA Annual Conference \(October 14-16\)](#)



The Institute for Medicaid Innovation celebrates WHO's Year of the Nurse and Midwife



Karen M. Dale, RN, MSN



Karen M. Dale, RN, MSN, is the Market President for AmeriHealth Caritas District of Columbia, a mission-based Medicaid Managed Care Organizations (MMCO) in Washington, DC.

Tell us more about your role as a nurse/midwife at a Medicaid managed care organization.

My role as a nurse executive involves leading an amazing team of mission-focused individuals to change the narrative from health plan to health catalyst, leading in solving psycho-social and policy challenges that prevent our enrollees from achieving their full health potential. Our leadership represents an irreplaceable force for innovation, collaboration, inclusion and equity. The partnerships and collaboration we established are increasingly effective at improving the enrollee's experience, supporting provider effectiveness, and producing value for the healthcare dollars the District invests. Our work includes a robust strategy to address the District's disparities in maternal health outcomes.

What do you think is the unique contribution and value of having nurses and/or midwives working with the Medicaid population?

Nurse midwives excel at taking a whole-person, whole-family view of pregnancy. They establish trust, engage as an equal partner with moms to be, offer options and honor preferences. This level of authentic partnership is capable of producing positive health outcomes for mom and baby as well as a better experience with the healthcare delivery system.

From your perspective as a nurse and/or midwife, what do you see as the emerging issues for Medicaid managed care?

Creating pathways to reimbursement for a full-range of pregnancy supports such as doulas. Ensuring that the healthcare system is easier to navigate. Addressing implicit bias where women feel judged for an unintended pregnancy. Creating incentives for quality providers to be located in lower income neighborhoods so women don't have to travel so far for care.

What innovative initiative are you leading right now that you are really excited about?

For our enrollees that are pregnant we provide:

- Prenatal and postpartum mobile app, Babyscripts. It connects expectant mothers with their provider by increasing access to care via a new point-of-care model that allows low-risk pregnant patients to receive the benefits of remote monitoring and virtual care.
- Meals for the mom and her family throughout pregnancy and up to six week post-partum.
- Lyft as a transportation option.
- Doula support
- Centering pregnancy

As you reflect over your career, what has been your most memorable experience interacting with a family or individual enrolled in Medicaid?

About three years ago I spoke with a mom who had experienced several miscarriages and was pregnant again at the time. She thanked me for all the support we provided - meals, psychotherapy, transportation, care coach, in-home visits. She said our support gave her the hope and strength to get through the health challenges of her pregnancy. Her story echoes in my heart and mind the reason to try harder to add value in the services we provide to our enrollees. It is not a destination; it is a journey to excellence and improved health outcomes.

Get Involved!

We have included a summary of the topics and projects that IMI's committees are actively tackling. Are you interested in joining the discussion? Email us at Info@MedicaidInnovation.org.

Dissemination & Implementation Committee

- Best practices in Medicaid managed care specific to value-based purchasing, high risk care coordination, pharmacy, women's health, child and adolescent health, behavioral health, MLTSS, and social determinants of health.
- Three-year, multi-stakeholder innovation incubator focused on reducing disparities through health system and payment reform.
- Updating IMI resources on 17P and preterm birth.

Subcommittee on the Health of All Women in Medicaid

- Fourth trimester coverage for women enrolled in Medicaid.
- Disparities and state variation in maternal mortality and morbidity.
- Comprehensive resource on high-value, evidence-based maternal models of care that are under-utilized in Medicaid.
- Access to long-acting reversible contraception (LARC).
- Levels of maternity care access.
- Utilization of IT to increase access to care.
- Women's health across the lifespan including older women in MLTSS.

Child & Adolescent Health Subcommittee

- Two generation model approaches.
- Asthma and parental smoking.
- Parental mental health including maternal depression, ACEs, and child abuse.
- Childhood obesity.

Behavioral Health Subcommittee

- Physical and behavioral health integration including value-based payment and high-risk care coordination.
- Substance use disorder.
- Maternal mental health including prenatal mood disorders and postpartum depression.

Data & Research Committee

- Annual Medicaid MCO survey with sections focused on value-based purchasing, high-risk care coordination, pharmacy, women's health, child and adolescent health, behavioral health, MLTSS, and social determinants of health.
- Risk adjustment models in Medicaid.
- State Medicaid enrollment form including readability and collection of SDOH data.

Annual Medicaid MCO Survey Subcommittee

- Annual Medicaid MCO survey with sections focused on value-based purchasing, high risk care coordination, pharmacy, women's health, child and adolescent health, behavioral health, MLTSS, and social determinants of health.
- Market analysis and benchmarks on Medicaid managed care.
- Trend analysis of Medicaid MCOs, 2016-2020.

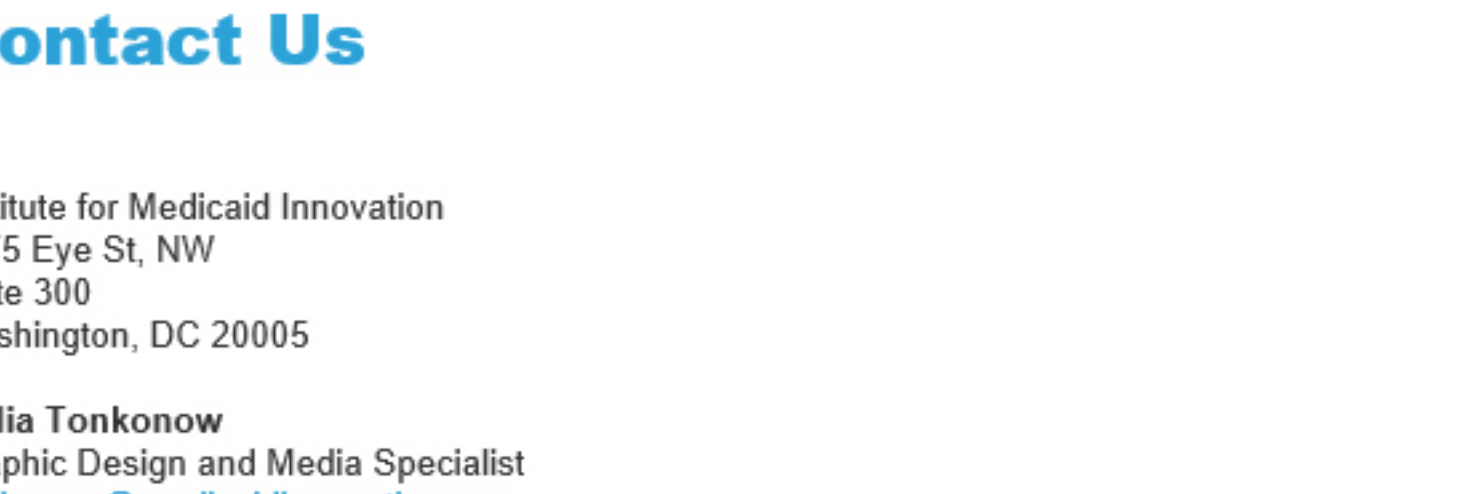
Social Determinants of Health Subcommittee

- Standardized screening of social needs.
- Readability and accessibility of the state Medicaid enrollment form.
- Evidence-based, high-value technology platforms that support connecting individuals with community health workers and resources.
- Integration and sharing of data and information between MCOs and CBOs.

Communication Committee

- Establishment of committee chair and charter.
- World Health Organization's Year of the Nurse and Midwife.
- Collaboration and dissemination efforts of IMI resources.

It's not the statistics that make Medicaid real.



It's when you love one of the numbers.™

Contact Us

Institute for Medicaid Innovation
1575 Eye St, NW
Suite 300
Washington, DC 20005

Lydia Tonkonow
Graphic Design and Media Specialist
ltkonow@medicaidinnovation.org

Follow IMI

The Institute for Medicaid Innovation (IMI), a 501(c)3 nonprofit research organization, is dedicated to providing information, data analysis, and innovative solutions that address important clinical, research, and policy issues in Medicaid. It achieves this through stakeholder engagement, research, education, quality improvement initiatives, and implementation activities. The Institute has taken on the ambitious agenda to identify what works well in Medicaid and to explore areas that need improvement, while developing and testing novel solutions.