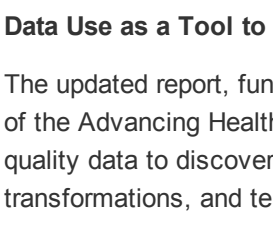




## Health Equity

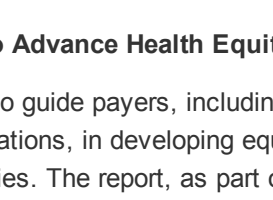


### Racial & Economic Inequities in Severe Maternal Morbidity Rates

The new study published in Women's Health Issues found that Black, Hispanic, and Asian pregnant individuals had higher rates of severe maternal morbidity compared to White individuals, calling attention to the role of racism and bias. Read the full article [here](#).

### Data Use as a Tool to Identify Disparities and Improve Quality

The updated report, funded by the Robert Wood Johnson Foundation as part of the Advancing Health Equity project, suggests strategically using stratified quality data to discover and prioritize differences in care, plan equity-focused transformations, and tell the story of the patient's experience. Access the report [here](#).



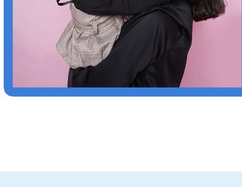
### Leveraging Value-Based Payment Approaches to Advance Health Equity

The new report identifies six connected strategies to guide payers, including state Medicaid agencies and managed care organizations, in developing equity-focused VBP approaches to mitigate health disparities. The report, as part of the Advancing Health Equity project funded by the Robert Wood Johnson Foundation, can be downloaded [here](#).

## New IMI Resources

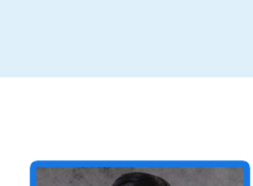
### Considerations for Children Enrolled in Medicaid During COVID-19

Using a social determinants of health framework, IMI assessed the impact of the intersection of the pandemic and the social determinants of health on children enrolled in Medicaid. Read more [here](#).



### LARC in Medicaid: Where do we go from here?

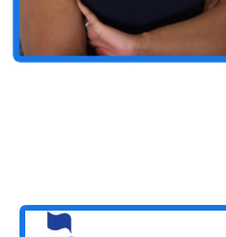
IMI published a commentary in Women's Health Issues that reviewed the different strategies Medicaid health plans and their clinical and community partners have deployed to improve equitable access to LARC. Read the full article [here](#).



## Recent Announcements

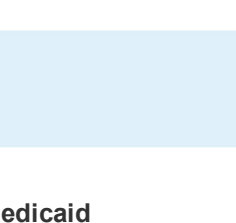
### IMI Welcomes Inaugural Deputy Executive Director, Dr. Nadia Glenn

Dr. Glenn's appointment followed a career spanning over 20 years with leading health care organizations, provider organizations, and academia. She has led highly-visible projects, process improvement, strategic planning, and integrated population health management initiatives. Her work is centered around researching, analyzing, implementing, and expanding strategic initiatives foundational to achieving health care transformation and health equity. Meet Dr. Glenn [here](#).

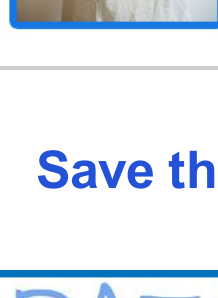


### New Funding for Research on COVID-19 and Breast & Cervical Cancer

IMI has been awarded funding from the American Cancer Society Cancer Action Network (ACS CAN) to launch a new research study to explore the impact of COVID-19 on income loss, loss of health insurance, or both and the effect this may have on the number of individuals who are eligible for the national Breast and Cervical Cancer Early Detection Program (BCCEDP). Learn more [here](#).



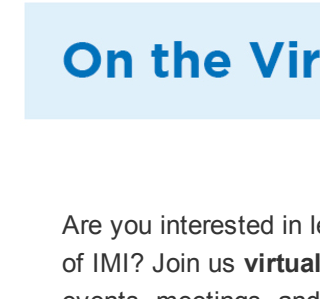
## IMI Events



### Virtual Learning Series on Midwifery-Led Care in Medicaid

IMI's learning series providing a roadmap to explore implementation of midwifery-led models of care in Medicaid is fully underway. While registration for the event is closed, resources and recordings from each month's meeting can be accessed [here](#).

## Save the Date!



On March 9th, IMI will release the 2021 annual Medicaid managed care survey. The survey results equip Medicaid stakeholders with the information needed to accurately articulate the national narrative about Medicaid managed care. This year, the survey contains two new sections: **COVID-19** and **Health Equity**. Learn more and follow for updates [here](#).

## On the Virtual Road with IMI

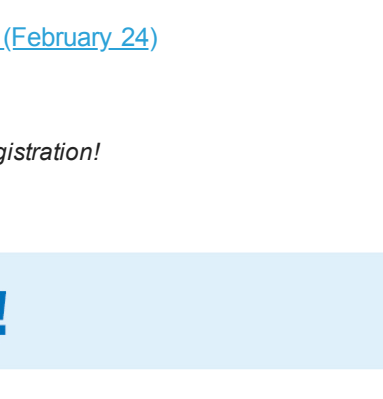
Are you interested in learning more about the work of IMI? Join us **virtually** at one of the many events, meetings, and conferences across the United States! Check out the list of upcoming events below and remember to register:

[ACAP 2021 Leadership Academy February Meetings \(February 22-25\)](#)

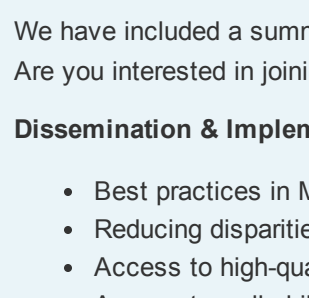
[Getting Payment Right: Unlocking High-Value Care through Appropriate Birth Center Reimbursement \(February 24\)](#)

[2020 Mom Annual Forum \(March 24-26\)](#)

*Please use our code **speakerfriend20** for 20% off your registration!*



## Come Work with Us!



### We're Hiring! Multiple Positions Available!

Join the IMI team! We are looking to hire a **health policy and research assistant**, **summer health policy & research interns**, a **social media intern**, and a **design fellow** to provide support on Medicaid-specific projects related to the mission and strategic priorities of IMI. Learn more about these opportunities [here](#).

## Get Involved!

We have included a summary of the topics and projects that IMI's committees are actively tackling. Are you interested in joining the discussion? Email us at [Info@MedicaidInnovation.org](mailto:Info@MedicaidInnovation.org).

### Dissemination & Implementation Committee

- Best practices in Medicaid managed care.
- Reducing disparities through health system and payment reform.
- Access to high-quality, person-centered contraceptive care via telehealth during COVID-19.
- Access to well-child visits and immunizations for children during COVID-19.
- COVID-19 vaccine distribution in the Medicaid population.
- Recuperative care and housing during COVID-19.
- Impact of changing technology and increased flexibilities during COVID-19.
- Community-based models of care, including community health workers.
- High-value, evidence-based maternal models of care.
- Prenatal and postpartum mood disorders during COVID-19.

### Subcommittee on the Health of All Women in Medicaid

- Fourth trimester coverage for women enrolled in Medicaid.
- Disparities and state variation in maternal mortality and morbidity.
- High-value, evidence-based maternal models of care.
- Access to contraception and contraceptive counselling services, including long-acting reversible contraception (LARC).
- Updating the women's health section of the annual Medicaid MCO survey.
- Levels of maternity care access during COVID.
- Utilization of IT to increase access to care.
- Women's health across the lifespan including older women in MLTSS.

### Child & Adolescent Health Subcommittee

- Two generation model approaches.
- Effect of COVID-19 on children's health.
- Effect of COVID-19 on children's health on immunization rates and well-child visits.
- State strategies to reduce barriers to children's enrollment in Medicaid.
- Asthma and parental smoking.
- Parental mental health including maternal depression, ACEs, and child abuse.
- School-based health centers in Medicaid.
- Behavioral health of school-aged children.
- The collaborative impact of families, schools, and Medicaid health plans to support child health.
- Youth in the child welfare system.
- Childhood obesity.

### Behavioral Health Subcommittee

- Behavioral health and telehealth policies during COVID-19.
- Social isolation and loneliness as a result of COVID-19.
- Role of technology in improving behavioral care access, coverage, and outcomes.
- Redesigning payment models and value-based purchasing for behavioral health.
- New Medicaid enrollees and behavioral health services.
- Racial and ethnic disparities in behavioral health services.
- Physical and behavioral health integration including value-based payment and high-risk care coordination.
- Substance use disorder.
- Maternal mental health including prenatal mood disorders and postpartum depression.

### Data & Research Committee

- Annual Medicaid MCO survey.
- Collection of COVID-19-specific information through the survey.
- Collection of information related to telehealth, health equity, and structural racism through the survey.
- Risk adjustment models in Medicaid.
- State Medicaid enrollment form including readability and collection of SDOH data.
- State strategies to facilitate Medicaid enrollment during COVID-19.
- Impact and value of temporary policies enacted during COVID-19, such as telehealth.
- Impact of community health workers and the processes by which they achieve impact.
- Medicaid state facts.
- Current and former foster care individuals in Medicaid.
- Conveying the value of Medicaid managed care through strategic messaging.

### Annual Medicaid MCO Survey Subcommittee

- Annual Medicaid MCO survey.
- Market analysis and benchmarks on Medicaid managed care.
- Trend analysis of Medicaid MCOs, 2016-2020.
- Collection of COVID-19 specific information through the survey.
- Collection of information related to telehealth, health equity, and structural racism through the survey.

### Social Determinants of Health Subcommittee

- Standardized screening of social needs.
- Readability and accessibility of the state Medicaid enrollment form.
- Technology platforms that connect individuals with community health workers.
- Integration and sharing of data and information between MCOs and CBOs.
- Impact of community health workers and the processes by which they achieve impact.
- Impact of COVID-19 on SDOH for Medicaid members and CBOs.
- Role of MCOs in addressing food insecurity for Medicaid members.

### Communication Committee

- Building membership and strategic priorities
- Collaboration and dissemination efforts of IMI resources.
- Identifying topics and function of IMI blog.

It's not the statistics that make Medicaid real.



It's when you love one of the numbers.™

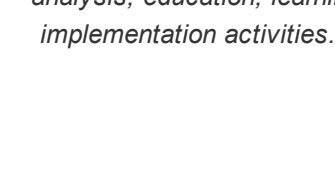
## Contact Us

Did you receive this newsletter from a friend? Please email [Itkonow@medicaidinnovation.org](mailto:Itkonow@medicaidinnovation.org) to be added to our mailing list.

Institute for Medicaid Innovation  
P.O. Box 40619  
Washington, DC 20016

**Lydia Tonkonow**  
Graphic Design and Media Specialist  
[Itkonow@medicaidinnovation.org](mailto:Itkonow@medicaidinnovation.org)

## Follow IMI



The Institute for Medicaid Innovation (IMI) is a 501(c)3 nonprofit, nonpartisan research and policy organization focused on providing evidence of innovative solutions that address important clinical, research, and policy issues in Medicaid through multi-stakeholder engagement, research, data analysis, education, learning collaboratives, quality improvement initiatives, and dissemination and implementation activities. IMI is not a membership or trade association and is funded exclusively through research grants and contracts.

Share this email:



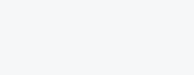
Manage your preferences | Opt out using TrueRemove™

Got this as a forward? Sign up to receive our future emails.

View this email online.

P.O. Box 40619  
Washington, DC | 20016 US

This email was sent to  
To continue receiving our emails, add us to your address book.



[Subscribe](#) to our email list.