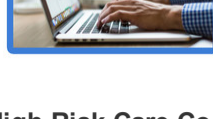




New IMI Resources

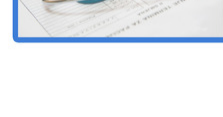
Top State Medicaid Agency Strategies for Enrollment During COVID-19



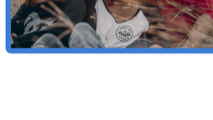
A new IMI Health Affairs blog post and complementary report identifies strategies states have used to facilitate timely enrollment for those who are newly eligible due to the pandemic. Read the report here and access the blog post here.

High-Risk Care Coordination Reduces Cost and Improves Outcomes

IMI released findings from their annual Medicaid managed care organization (MCO) survey report exploring the impact of high-risk care coordination in the Medicaid population. Read the report here.



Advancing Person-Centered LARC Access in Medicaid

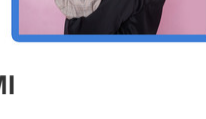


The new report emphasizes the possibility of person-centered care and collaboration improving equitable access to LARC in Medicaid. Read and download the report here.

Recent Announcements

IMI Launches High-Value, Evidence-Based Maternal Virtual Learning Series

The national initiative focuses on midwifery-led care to address disparities and equity in the Medicaid population. Read more and learn how to participate here.



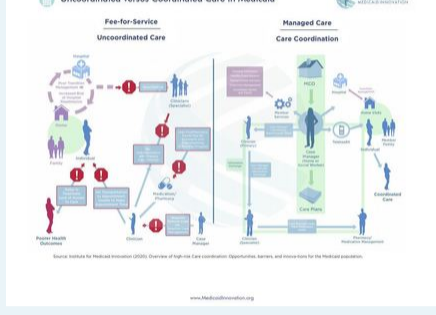
New Fellow Brings Child and Adolescent Health Focus to IMI



IMI welcomes Kelli DePriest, PhD, RN to the team to investigate child and adolescent health policy opportunities in Medicaid and provide support to many of IMI's other research projects. Read more here.

New on the Blog

Visualizing the Benefits of High-Risk Care Coordination in the Medicaid Population



The new blog post highlights key takeaways from the recently released IMI report on high-risk care coordination in Medicaid and discusses the report's main, comprehensive infographic in further detail. Read more here.

Requests for Information

Nominate Nurses and Midwives Working in Medicaid for Compendium



The World Health Organization has named 2020 "The Year of the Nurse and Midwife." In celebration, the Institute for Medicaid Innovation is highlighting nurses and midwives who make a difference in the lives of the Medicaid population; including their families and community.

In phase two of this project, IMI will focus on how COVID-19 has impacted the day-to-day work done by nurses and midwives in the Medicaid space. If you or someone you know would like to be featured in this initiative, please submit this complete form.

Participate in AHRQ's Rural Postpartum Mental Health Challenge



Do you have a success story or program proposal that can help rural communities improve care for postpartum mental health issues?

If so, the Agency for Healthcare Research and Quality (AHRQ) invites you to compete for a prize in its AHRQ Cross-Sectional Innovation to Improve Rural Postpartum Mental Health Challenge. For more information, visit the challenge website.

Get Involved!

We have included a summary of the topics and projects that IMI's committees are actively tackling. Are you interested in joining the discussion? Email us at Info@MedicaidInnovation.org.

Dissemination & Implementation Committee

- Best practices in Medicaid managed care.
• Reducing disparities through health system and payment reform.
• Access to high-quality, person-centered contraceptive care via telehealth during COVID-19.
• Access to well-child visits and immunizations for children during COVID-19.
• Impact of changing technology and increased flexibilities during COVID-19.
• High-value, evidence-based maternal models of care.
• Prenatal and postpartum mood disorders during COVID-19.

Subcommittee on the Health of All Women in Medicaid

- Fourth trimester coverage for women enrolled in Medicaid.
• Disparities and state variation in maternal mortality and morbidity.
• High-value, evidence-based maternal models of care.
• Access to long-acting reversible contraception (LARC).
• Updating the women's health section of the annual Medicaid MCO survey.
• Levels of maternity care access during COVID.
• Utilization of IT to increase access to care.
• Women's health across the lifespan including older women in MLTSS.

Child & Adolescent Health Subcommittee

- Two generation model approaches.
• Effect of COVID-19 on children's health on immunization rates and well-child visits.
• State strategies to reduce barriers to children's enrollment in Medicaid.
• Asthma and parental smoking.
• Parental mental health including maternal depression, ACEs, and child abuse.
• Childhood obesity.

Behavioral Health Subcommittee

- Behavioral health and telehealth policies during COVID-19.
• Social isolation and loneliness as a result of COVID-19.
• Role of technology in improving behavioral care access, coverage, and outcomes.
• New Medicaid enrollees and behavioral health services.
• Physical and behavioral health integration including value-based payment and high-risk care coordination.
• Substance use disorder.
• Maternal mental health including prenatal mood disorders and postpartum depression.

Data & Research Committee

- Annual Medicaid MCO survey.
• Collection of COVID-19-specific information through the survey.
• Risk adjustment models in Medicaid.
• State Medicaid enrollment form including readability and collection of SDOH data.
• State strategies to facilitate Medicaid enrollment during COVID-19.
• Impact and value of temporary policies enacted during COVID-19, such as telehealth.
• Impact of community health workers and the processes by which they achieve impact.
• Medicaid state facts.
• Current and former foster care individuals in Medicaid.

Annual Medicaid MCO Survey Subcommittee

- Annual Medicaid MCO survey.
• Market analysis and benchmarks on Medicaid managed care.
• Trend analysis of Medicaid MCOs, 2016-2020.
• Collection of COVID-19 specific information through the survey.

Social Determinants of Health Subcommittee

- Standardized screening of social needs.
• Readability and accessibility of the state Medicaid enrollment form.
• Technology platforms that connect individuals with community health workers.
• Integration and sharing of data and information between MCOs and CBOs.
• Impact of community health workers and the processes by which they achieve impact.

Communication Committee

- World Health Organization's Year of the Nurse and Midwife compendium project phase two.
• Collaboration and dissemination efforts of IMI resources.
• Identifying topics and function of IMI blog.

It's not the statistics that make Medicaid real.



It's when you love one of the numbers.™

Contact Us

Institute for Medicaid Innovation
P.O. Box 40619
Washington, DC 20016

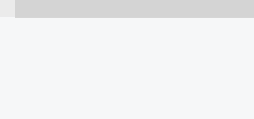
Lydia Tonkonow
Graphic Design and Media Specialist
ltonkonow@medicaidinnovation.org

Follow IMI



The Institute for Medicaid Innovation (IMI) is a 501(c)3 nonprofit, nonpartisan research and policy organization focused on providing evidence of innovative solutions that address important clinical, research, and policy issues in Medicaid, through multi-stakeholder engagement, dissemination and implementation activities. IMI is not a membership or trade association and is funded exclusively through research grants and contracts.

Share this email:



Manage your preferences | Opt out using TrueRemove™
Got this as a forward? Sign up to receive our future emails.
View this email online.

1575 I Street, NW Suite 300
Washington, DC, DC | 20005 US

This email was sent to
To continue receiving our emails, add us to your address book.



Subscribe to our email list.