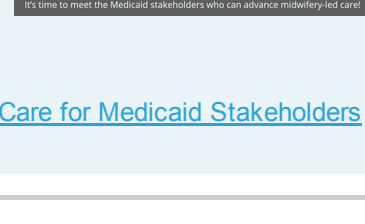




New IMI Resources

Medicaid & Midwifery-Led Care Learning Series

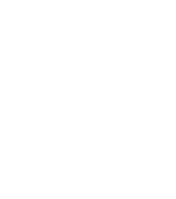
The Institute for Medicaid Innovation's popular midwifery-led models of care eight-part learning series concluded earlier this month. All session materials have been archived and are now available to the public along with comprehensive supplemental resources.



- Archived Recordings: Learning Series Sessions #1-8
Checklist: Opportunities to Advance Midwifery-Led Models of Care for Medicaid Stakeholders

Five Big Ideas to Address the U.S. Maternal Mortality Crisis

A new report released by the Aspen Health Strategy Group (AHS), under the leadership of former HHS Secretaries Sebelius and Thompson and with guidance from the Institute for Medicaid Innovation, identified Five Big Ideas to address the ongoing health crisis in the U.S.

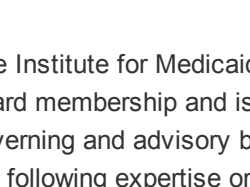
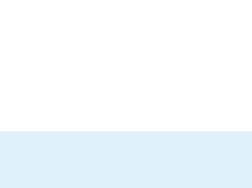


- Idea #1: Make maternal mortality and morbidity a national priority.
Idea #2: Build and support community care models.
Idea #3: Redesign insurance around women's needs.
Idea #4: Tackle racism that undermines women-centered care.
Idea #5: Invest in research, data, and analysis.

Read more here.

Understanding Medicaid State Plan Amendments & Waivers

How much do you know about the use of state plan amendments and waivers in the Medicaid program? IMI's new report provides a comprehensive look at the role amendments and waivers play in shaping the Medicaid program. Read the full article here.

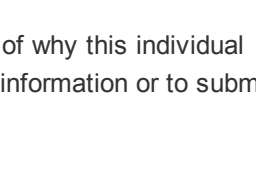


Top Innovative Initiatives led by Medicaid MCOs

Through a competitive review process, IMI highlighted innovative initiatives and best practices led by health plans across eight categories. Learn about the finalists and the recognized programs here.

IMI Board Opportunities

The Institute for Medicaid Innovation is in the early stages of our expanding our board membership and is accepting nominations to fill positions on both the governing and advisory boards. We are specifically seeking nominations with the following expertise or perspective:

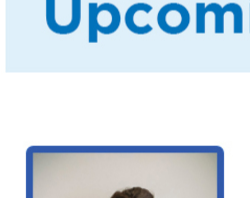


- Communications
Medicaid enrollee, family, and caregiver
Development
Legal

Nominations will be accepted until July 1st and should include a brief description of why this individual should serve on the IMI board along with their current CV/resume. For additional information or to submit nomination, please email JMoore@MedicaidInnovation.org

Recent Announcements

New IMI Finance Director Joins Executive Team



Tiffany Faulkner, a driven professional with over 20+ years of experience in non-profit accounting, has joined the IMI executive team. As a native of the Washington, DC area, she has dedicated her career to providing excellent accounting and financial services to DC based non-profits and small businesses. Tiffany joined the IMI executive team in May and will lead the accounting and financial management of the organization.

Upcoming Opportunity



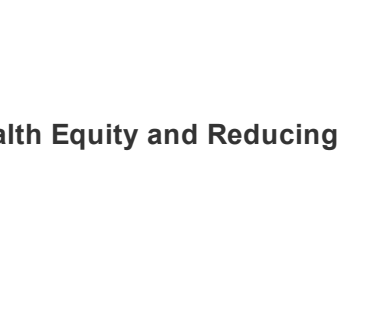
National Learning Collaborative: Medicaid & Maternal Health

Join the Institute for Medicaid Innovation in an intensive 3-year learning collaborative that will provide support, resources, and guidance for state-based teams looking to develop sustainable initiatives to advance midwifery-led models of care for the Medicaid population in their communities.

Learn more and apply for the learning collaborative here.

On the Virtual Road with IMI

Are you interested in learning more about the work of IMI? Join us virtually at one of the many events, meetings, and conferences across the United States! Check out the list of upcoming events below and remember to register:



Annual Texas Medicaid and CHIP Managed Care Virtual Quality Forum
June 1-2, 2021
Learn more and register here

NASEM Workshop on Advancing Maternal Health Equity and Reducing Maternal Mortality
June 7-8, 2021
Learn more and register here

AcademyHealth Annual Research Meeting
June 14-17, 2021
Learn more and register here

In case you missed it...

This past month, IMI spoke at a number of virtual events. Watch archived recordings from the events below:

- University of Pennsylvania School of Nursing's event "Reducing Maternal Mortality: Multilevel Approaches to Reduce Maternal Death"
2020 Mom's webinar "What Medicaid Agencies and Managed Care Organizations can do to Close Gaps in Maternal Mental Health"

Get Involved!

We have included a summary of the topics and projects that IMI's committees are actively tackling. Are you interested in joining the discussion? Email us at Info@MedicaidInnovation.org.

Dissemination & Implementation Committee

- Best practices in Medicaid managed care.
Reducing disparities through health system and payment reform.
Access to high-quality, person-centered contraceptive care via telehealth during COVID-19.
Access to well-child visits and immunizations for children during COVID-19.
COVID-19 vaccine distribution in the Medicaid population.
Recuperative care and housing during COVID-19.
Impact of changing technology and increased flexibilities during COVID-19.
Community-based models of care, including community health workers.
High-value, evidence-based maternal models of care.
Prenatal and postpartum mood disorders during COVID-19.

Subcommittee on the Health of All Women in Medicaid

- Fourth trimester coverage for women enrolled in Medicaid.
Disparities and state variation in maternal mortality and morbidity.
High-value, evidence-based maternal models of care.
Access to contraception and contraceptive counselling services, including long-acting reversible contraception (LARC).
Updating the women's health section of the annual Medicaid MCO survey.
Levels of maternity care access during COVID.
Utilization of IT to increase access to care.
Women's health across the lifespan including older women in MLTSS.

Child & Adolescent Health Subcommittee

- Two generation model approaches.
Effect of COVID-19 on children's health including a focus on immunization rates and well-child visits.
State strategies to reduce barriers to children's enrollment in Medicaid.
Asthma and parental smoking.
Parental mental health including maternal depression, ACEs, and child abuse.
School-based health centers in Medicaid.
Behavioral health of school-aged children.
The collaborative impact of families, schools, and Medicaid health plans to support child health.
Youth in the child welfare system.
Childhood obesity.

Behavioral Health Subcommittee

- Behavioral health and telehealth policies during COVID-19.
Social isolation and loneliness as a result of COVID-19.
Role of technology in improving behavioral care access, coverage, and outcomes.
Alternative payment models and value-based purchasing for behavioral health.
New Medicaid enrollees and behavioral health services.
Racial and ethnic disparities in behavioral health services.
Physical and behavioral health integration including value-based payment and high-risk care coordination.
Substance use disorder.
Maternal mental health including prenatal mood disorders and postpartum depression.

Data & Research Committee

- Annual Medicaid MCO survey.
Collection of COVID-19-specific information through the survey.
Collection of information related to telehealth, health equity, and structural racism through the survey.
Risk adjustment models in Medicaid.
State Medicaid enrollment form including readability and collection of SDOH data.
State strategies to facilitate Medicaid enrollment during COVID-19.
Impact and value of temporary policies enacted during COVID-19, such as telehealth.
Impact of community health workers and the processes by which they achieve impact.
Medicaid state facts.
Current and former foster care individuals in Medicaid.
Conveying the value of Medicaid managed care through strategic messaging.

Annual Medicaid MCO Survey Subcommittee

- Annual Medicaid MCO survey.
Market analysis and benchmarks on Medicaid managed care.
Trend analysis of Medicaid MCOs, 2016-2020.
Collection of COVID-19 specific information through the survey.
Collection of information related to telehealth, health equity, and structural racism through the survey.

Social Determinants of Health Subcommittee

- Standardized screening of social needs.
Readability and accessibility of the state Medicaid enrollment form.
Technology platforms that connect individuals with community health workers.
Integration and sharing of data and information between MCOs and CBOs.
Impact of community health workers and the processes by which they achieve impact.
Impact of COVID-19 on SDOH for Medicaid members and CBOs.
Role of MCOs in addressing food insecurity for Medicaid beneficiaries.

Communication Committee

- Building membership and strategic priorities
Collaborating and dissemination efforts of IMI resources.
Building social media campaign around Medicaid health plan members and/or staff.

It's not the statistics that make Medicaid real.



It's when you love one of the numbers.™

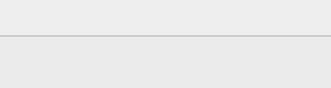
Contact Us

Did you receive this newsletter from a friend? Please email tonkonow@medicaidinnovation.org to be added to our mailing list.

Institute for Medicaid Innovation
P.O. Box 40619
Washington, DC 20016

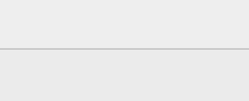
Lydia Tonkonow
Graphic Design and Media Specialist
tonkonow@medicaidinnovation.org

Follow IMI



The Institute for Medicaid Innovation (IMI) is a 501(c)3 nonprofit, nonpartisan research and policy organization focused on providing evidence of innovative solutions that address important clinical, research, and policy issues in Medicaid through multi-stakeholder engagement, research, data analysis, education, learning collaboratives, quality improvement initiatives, dissemination and implementation activities. IMI is not a membership or trade association and is funded exclusively through research grants and contracts.

Share this email:



Manage your preferences | Opt out using TrueRemove™
Got this as a forward? Sign up to receive our future emails.
View this email online.

P.O. Box 40619
Washington, DC | 20016 US

This email was sent to...
To continue receiving our emails, add us to your address book.



Subscribe to our email list.