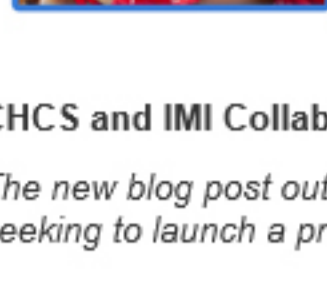




# INSTITUTE FOR MEDICAID INNOVATION

## New IMI Resources

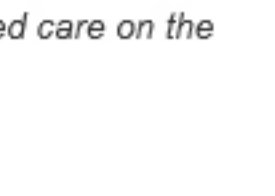
### Midwifery Support in States Leads to Better Birth Outcomes



The report contains critical information necessary for Medicaid stakeholders who are considering improving access and coverage for the midwifery-led model of care. Read the report [here](#) and access the business case checklist [here](#).

### CHCS and IMI Collaboration: Prospective Payments during COVID-19

The new blog post outlines design and implementation considerations for MCOs seeking to launch a prospective payment model. Read the post [here](#).



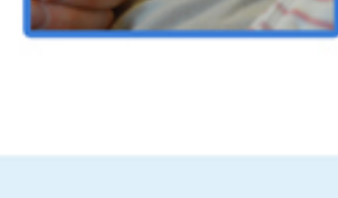
### New Evidence: Community Health Workers & Doulas Improve Maternal Health

The new report analyzes the unique impact of community-based care on the Medicaid population. Read and download the report [here](#).



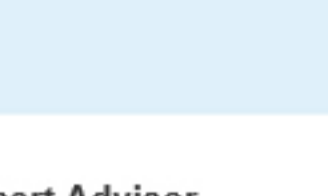
### Medicaid Expansion Points to Improved Equity in Birth Outcomes

The article investigates the relationship between birth outcomes and Medicaid expansion status by county. Read the article [here](#).



### Medicaid Covers Nearly Half of All Preterm Births in the US: Progesterone Treatment May Not Be the Solution

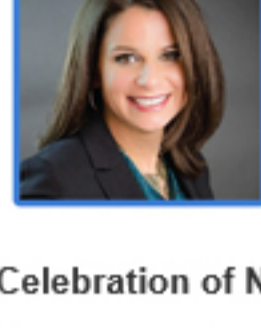
IMI released guidance on the efficacy of preterm birth treatments in their new report. Read the full report [here](#).



## Recent Announcements

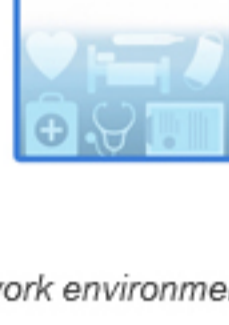
### IMI Executive Director Selected to Serve as AHRQ Expert Advisor

Learn more about the Cross-Sectional Innovation to Improve Rural Postpartum Mental Health Challenge [here](#).



### Celebration of Nurses and Midwives Working in Medicaid

The compendium focuses on the unique contributions of nurses working at Medicaid health plans. Read and download the compendium [here](#).



### Three Interns Join the IMI Team for Summer 2020

IMI welcomes Audrey, Noelle, and Sara to the new virtual work environment this summer. Read more [here](#).



## Requests for Information

### Nominate Nurses and Midwives Working in Medicaid for Compendium

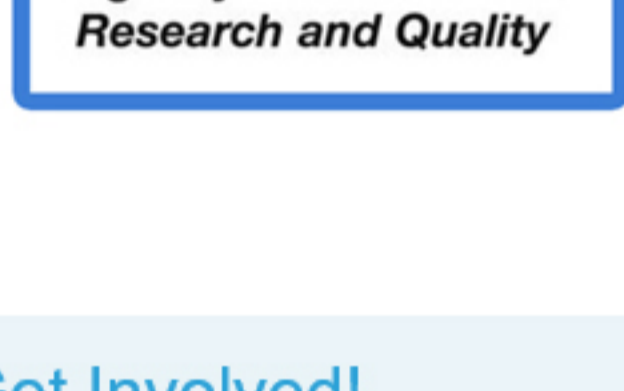
The World Health Organization has named 2020 "The Year of the Nurse and Midwife." In celebration, the Institute for Medicaid Innovation is highlighting nurses and midwives who make a difference in the lives of the Medicaid population; including their families and community.



In phase two of this project, IMI will focus on how COVID-19 has impacted the day-to-day work done by nurses and midwives in the Medicaid space. If you or someone you know would like to be featured in this initiative, please submit this complete [form](#).

### Participate in an AHRQ Rural Postpartum Mental Health Challenge

Do you have a success story or program proposal that can help rural communities improve care for postpartum mental health issues?



If so, the Agency for Healthcare Research and Quality (AHRQ) invites you to compete for a prize in its AHRQ Cross-Sectional Innovation to Improve Rural Postpartum Mental Health Challenge. For more information, visit the challenge [website](#).

## Get Involved!

We have included a summary of the topics and projects that IMI's committees are actively tackling. Are you interested in joining the discussion? Email us at [Info@MedicaidInnovation.org](mailto:Info@MedicaidInnovation.org).

### Dissemination & Implementation Committee

- Best practices in Medicaid managed care specific to value-based purchasing, high risk care coordination, pharmacy, women's health, child and adolescent health, behavioral health, MLTSS, and social determinants of health.
- Three-year, multi-stakeholder innovation incubator focused on reducing disparities through health system and payment reform.
- Understanding access to high-quality, person-centered contraceptive care via telehealth during COVID-19.
- Understanding access to well-child visits and immunizations for children during COVID-19.
- Understanding the impact of changing technology (including training providers in conducting telehealth appointments) during COVID-19.
- Understanding the impact and value of temporary policies enacted during COVID-19, including audio only versus video conference telehealth appointments.
- Role of nurse-midwives and freestanding birth centers in Medicaid, particularly during the COVID-19 pandemic.

### Subcommittee on the Health of All Women in Medicaid

- Fourth trimester coverage for women enrolled in Medicaid.
- Disparities and state variation in maternal mortality and morbidity.
- Building upon the momentum of the newly released, comprehensive resource on high-value, evidence-based maternal models of care that are under-utilized in Medicaid.
- Access to long-acting reversible contraception (LARC).
- Levels of maternity care access, with particular focus on the implications of maternal health care access during COVID-19.
- Utilization of IT to increase access to care.
- Women's health across the lifespan including older women in MLTSS.
- Changing regulations and guidance on women's health, including prenatal visits, telehealth, and maternal mental health as part of the response to COVID-19.

### Child & Adolescent Health Subcommittee

- Two generation model approaches.
- The effect of COVID-19 on children's health, including access to care such as well-visits and immunizations, access to food, safe living environments, and education, and mental health issues including loneliness.
- Asthma and parental smoking.
- Parental mental health including maternal depression, ACEs, and child abuse.
- Childhood obesity.

### Behavioral Health Subcommittee

- Behavioral health and telehealth policies during COVID-19, including innovative approaches to behavioral health services delivery.
- Social isolation and loneliness as a result of COVID-19.
- Capturing telehealth data, including no-show rates for telepsychiatry and other behavioral health services delivered via telehealth, during COVID-19.
- New Medicaid enrollees and behavioral health services.
- Physical and behavioral health integration including value-based payment and high-risk care coordination.
- Substance use disorder.
- Maternal mental health including prenatal mood disorders and postpartum depression.

### Data & Research Committee

- Annual Medicaid MCO survey with sections focused on value-based purchasing, high-risk care coordination, pharmacy, women's health, child and adolescent health, behavioral health, MLTSS, and social determinants of health.
- Collection of COVID-19-specific information through the survey.
- Risk adjustment models in Medicaid.
- State Medicaid enrollment form including readability and collection of SDOH data.
- State strategies to facilitate Medicaid enrollment during COVID-19.
- Understanding the impact and value of temporary policies enacted during COVID-19, such as telehealth.
- Assessing the impact of community health workers and the processes by which they achieve impact.
- Medicaid state facts.
- Current and former foster care individuals in Medicaid.

### Annual Medicaid MCO Survey Subcommittee

- Annual Medicaid MCO survey with sections focused on value-based purchasing, high risk care coordination, pharmacy, women's health, child and adolescent health, behavioral health, MLTSS, and social determinants of health.
- Market analysis and benchmarks on Medicaid managed care.
- Trend analysis of Medicaid MCOs, 2016-2020.
- Collection of COVID-19 specific information through the survey.

### Social Determinants of Health Subcommittee

- Standardized screening of social needs.
- Readability and accessibility of the state Medicaid enrollment form.
- Evidence-based, high-value technology platforms that support connecting individuals with community health workers and resources.
- Integration and sharing of data and information between MCOs and CBOs.
- Assessing the impact of community health workers and the processes by which they achieve impact.

### Communication Committee

- World Health Organization's Year of the Nurse and Midwife compendium project phase two.
- Collaboration and dissemination efforts of IMI resources.

It's not the statistics that make Medicaid real.



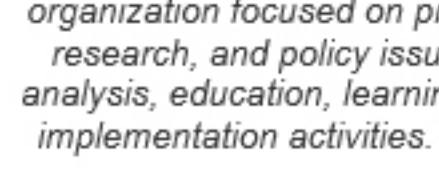
It's when you love one of the numbers.™

## Contact Us

Institute for Medicaid Innovation  
1575 Eye St, NW  
Suite 300  
Washington, DC 20005

Lydia Tonkonow  
Graphic Design and Media Specialist  
[tonkonow@medicaidinnovation.org](mailto:tonkonow@medicaidinnovation.org)

## Follow IMI



The Institute for Medicaid Innovation (IMI) is a 501(c)3 nonprofit, nonpartisan research and policy organization focused on providing evidence of innovative solutions that address important clinical, research, and policy issues in Medicaid through multi-stakeholder engagement, research, data analysis, education, learning collaboratives, quality improvement initiatives, and dissemination and implementation activities. IMI is not a membership or trade association and is funded exclusively through research grants and contracts.