



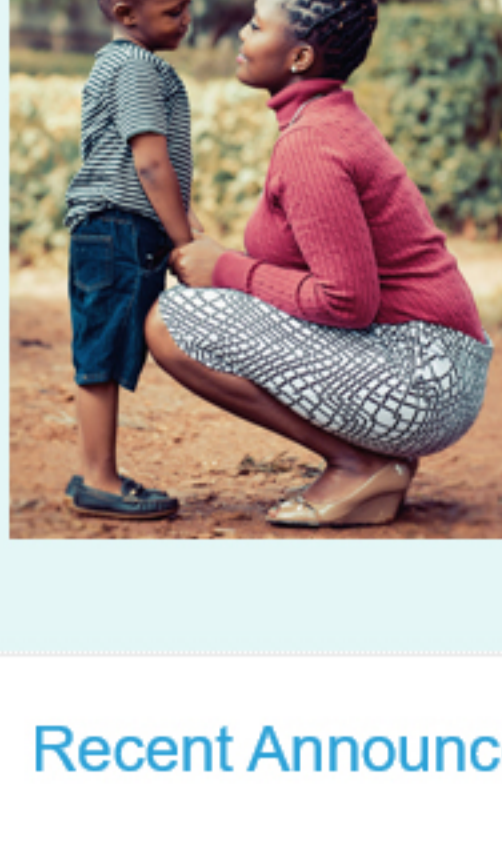
INSTITUTE FOR MEDICAID INNOVATION

National Women's Health Week

This year, May 12-18 is [National Women's Health Week](#). To prepare for this event, IMI has provided a list of our resources highlighting women's health in Medicaid.

- [Innovation in Maternal Depression and Anxiety: Medicaid Initiatives in California and Nationwide Report](#)
- [Trends and Disparities in Delivery Hospitalizations Involving Severe Maternal Morbidity, 2006-2015](#)
- [Addressing the Opioid Epidemic in Medicaid Managed Care for Women & Newborns](#)
- [Medicaid Managed Care and Reproductive Health Care Services for Women](#)

Click [here](#) to access all of our women's health resources.



Recent Announcements

IMI's Dr. Moore Co-Authors Article in JAMA on Medicaid Expansion and Preterm Birth

The article, "[Association of State Medicaid Expansion Status with Low Birth Weight and Preterm Birth](#)," examines the effects of Medicaid expansion through the Affordable Care Act on key birth outcomes such as preterm birth and birth weight. Read the full press release [here](#) and the editor's note in JAMA about the article [here](#).



Health Affairs

Blog Post by Leaders in Obstetric Care Spotlight Strategies to Address Maternal Mortality and Persistent Racial Disparities in Pregnancy Outcomes

In a May 6 Health Affairs blog, a team of nurses, physicians, and midwives offer concrete steps to reduce the number of maternal deaths by focusing on the postpartum period or fourth trimester. Read the blog post [here](#) and the full IMI press release [here](#).

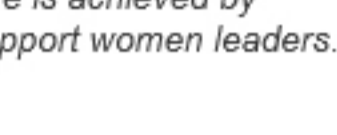
New IMI Report Identifies Opportunities to Bolster Behavioral Health Services in Medicaid

Using data collected from IMI's 2018 annual Medicaid managed care survey, the report shows the trends of behavioral health care access and coverage over time, as well as underscores priorities for stakeholders to better address the needs in the future. Click [here](#) to read the [report](#).



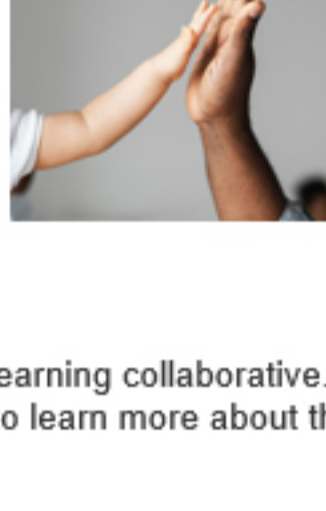
IMI's Dr. Moore, a National Medicaid Leader, Joins the Ranks of Women of Impact

Women of Impact strengthen women in health care, helping them envision greater leadership roles and providing a network to support and advise them. Their focus on increasing the number of women executives in healthcare is achieved by developing and collaborating with other female-led networks that grow and support women leaders. For more, read the full [press release](#).



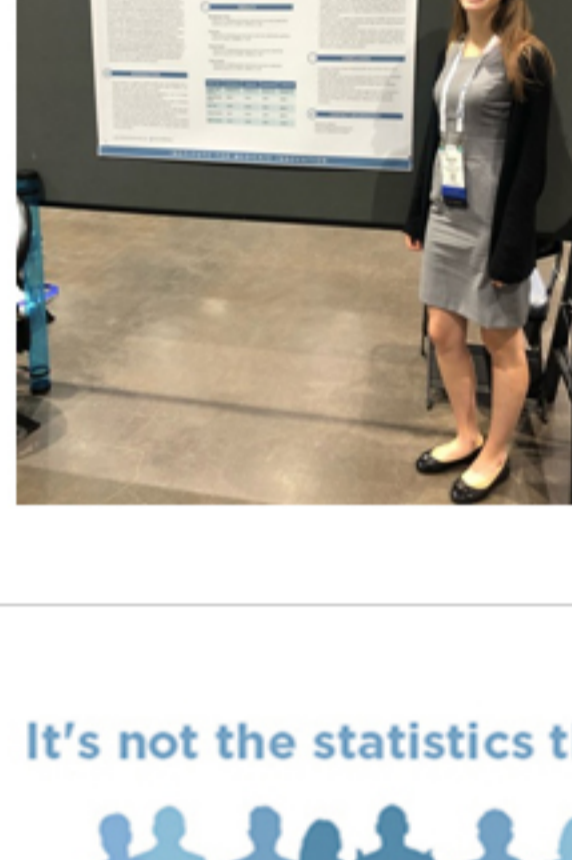
Advancing Health Equity Learning Collaborative

The Institute for Medicaid Innovation (IMI), University of Chicago, and Center for Healthcare Strategies (CHCS) have partnered to launch an exciting new three-year initiative, funded by the Robert Wood Johnson Foundation, "[Advancing Health Equity: Leading Care Payment & Systems Transformation](#)." The project will identify best practices, innovative initiatives, and policy recommendations for integrating payment and healthcare delivery reforms that seek to eliminate health and healthcare disparities and achieve equity by partnering Medicaid managed care organizations directly with state Medicaid agencies and healthcare provider organizations.



The group is currently accepting Requests for Application to participate in the learning collaborative. For questions about the process, technical assistance for the application, and to learn more about the initiative, [visit our website](#).

On the Road with IMI



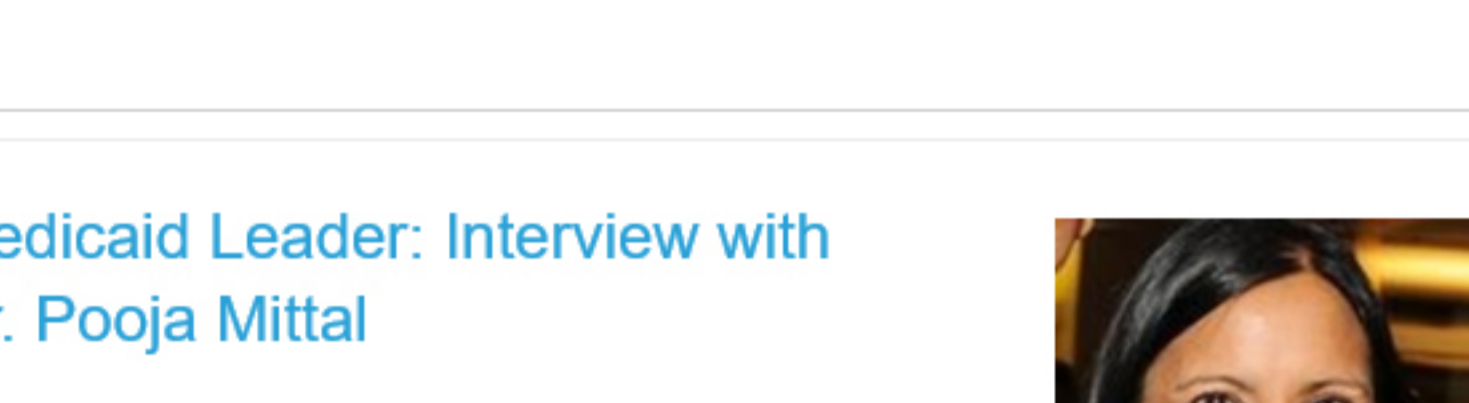
Over the next few months, IMI will be presenting at a number of conferences. Check out the list below and remember to register to learn more about our research in the field:

[Academy Health's Annual Research Meeting](#) (June 2-4)

[International Family Nursing Conference](#) (August 13-19)

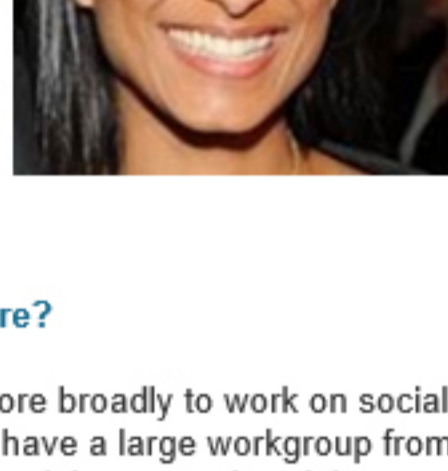
[Medicaid Health Plans of American Annual Conference](#) (September 18-20)

It's not the statistics that make Medicaid real.



It's when you love one of the numbers.™

Medicaid Leader: Interview with Dr. Pooja Mittal



Dr. Pooja Mittal serves as Medical Director at HealthNet, Adjunct Clinical Associate Professor at Stanford School of Medicine, and Perinatal HIV Expert Consultant at Clinicians Consultation Center, UCSF (University of California, San Francisco).

What do you see as the emerging issues in Medicaid managed care?

I see the next big frontier as moving more upstream and committing more broadly to work on social determinants of health in innovative ways. Within our organization, we have a large workgroup from across all state markets that talk about the innovative work that they are doing around social determinants of health. This way, we can learn from each other and move initiatives forward at state-wide and community levels.

What innovative initiative are you leading right now that you are really excited about?

The biggest project that I'm working on right now is a community-based doula project. We have a plan partner with a community-based organization that provides doula services for African American women in the Los Angeles area and supports them through prenatal care, pregnancy, and the postpartum period.

What past innovative projects have you enjoyed working on the most?

Cross-sectional collaborations are important to sustain and push initiatives forward to make lasting change that is embedded into the culture. One of my favorite projects that I participated in was a collaborative called Smart Care California, a public-private partnership that worked to reduce affordable healthcare in California. This group focused on making a change on three major issues in California: c-section, opioids use, and lower back pain. It put together best practices, toolkits, and white papers with information about how to make long-lasting change.

What is your most memorable experience interacting with a family or individual enrolled in Medicaid?

Within my last role, I worked a lot in maternal and child health. One of my favorite experiences was focused on early parenting at San Francisco General Hospital where I ran centering parenting groups. We had the fortune to work with the same group of women from the midwifery centering pregnancy groups through the first year of parenting. It was incredible to see what happened over that year, because we had this natural synergy of women who were supporting each other through this parenting journey. The women— who often, as immigrants, were without their family or their extended network—were able to develop a close bond with each other and to become part of each other's community.

While working in this role, we had a woman who was having a lot of difficulty bonding with her baby because she had had a challenging pregnancy. We would be in a group, and the baby would start crying, and she wouldn't notice or pay much attention to the baby. The woman around her would say, "You know, when your baby does that, you need to pick him up and hold him. You need to remind him that he is loved." Just in that gentle prodding and modeling they were able, along with other supportive interventions from social work and case managers, to wrap around this woman and provide her support in a way that allowed her to finally understand how to bond with her baby. Pregnancy and the first years of parenting are a really vulnerable time for women and for families, and I think it was a really nice way for us to support these women and these babies in growing together.

Get Involved!

We have included a summary of the major projects that IMI's committees are actively tackling. Are you interested in joining the discussion? Email Dr. Jennifer Moore at JMoore@MedicaidInnovation.org.

Dissemination & Implementation Committee

- Disparities and state variation in maternal mortality & morbidity.
- Best practices in Medicaid managed care specific to value-based purchasing, high risk care coordination, pharmacy, women's health, child and adolescent health, behavioral health, LTSS, and social determinants of health.
- Comprehensive resource on high-value, evidence-based maternal models of care that are under utilized in Medicaid.
- Access to Long-Acting Reversible Contraception (LARC).
- Social determinants of health.
- Three-year, multi-stakeholder innovation incubator focused on reducing disparities through health system and payment reform.

Subcommittee on the Health of All Women in Medicaid

- Fourth trimester coverage for women enrolled in Medicaid.
- Disparities and state variation in maternal mortality and morbidity.
- Comprehensive resource on high-value, evidence-based maternal models of care that are under-utilized in Medicaid.
- Access to Long-Acting Reversible Contraception (LARC).
- Disparities in pre-term birth.

Child & Adolescent Health Subcommittee

- Two generation approaches.
- Asthma and parental smoking.
- Parental mental health including maternal depression, ACEs, and child abuse.
- Childhood obesity.

Behavioral Health Subcommittee

- Physical and behavioral health integration including the use of CPT codes.
- Opioid use during pregnancy and neonatal abstinence syndrome.
- HEDIS measures for behavioral health.
- Housing for individuals with serious mental illness, behavioral health challenges, intellectually disabled or developmentally disabled individuals, and individuals with co-occurring disorders.

Data & Research Committee

- Annual Medicaid Managed Care Survey with sections focused on value-based purchasing, high risk care coordination, pharmacy, women's health, child and adolescent health, behavioral health, LTSS, and social determinants of health.
- Risk adjustment models in Medicaid.
- Social determinants of health.
- Standardized collection of social needs data.

Annual Medicaid MCO Survey Subcommittee

- Annual Medicaid Managed Care Survey with sections focused on value-based purchasing, high risk care coordination, pharmacy, women's health, child and adolescent health, behavioral health, LTSS, and social determinants of health.
- Market analysis and benchmarks on Medicaid managed care.
- The role of health plans in providing long-term services and supports.
- Value-based purchasing and alternative payment models in Medicaid.

Social Determinants of Health Subcommittee

- Standardized screening of social needs.
- Technology platforms the support connecting individuals with community health workers and resources.
- Integration and sharing of data and information.

The Institute for Medicaid Innovation (IMI), a 501(c)3 nonprofit research organization, is dedicated to providing information, data analysis, and innovative solutions that address important clinical, research, and policy issues in Medicaid. It achieves this through stakeholder engagement, research, education, quality improvement initiatives, and implementation activities. The Institute has taken on the ambitious agenda to identify what works well in Medicaid and to explore areas that need improvement, while developing and testing novel solutions.