



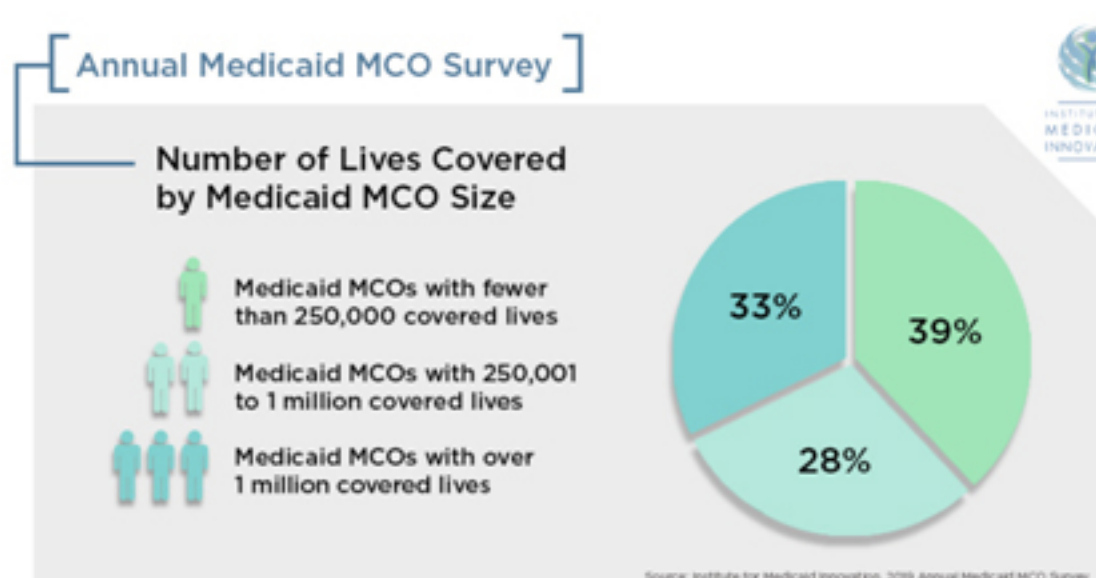
INSTITUTE FOR MEDICAID INNOVATION

Just Released: IMI's 2019 Annual Medicaid MCO Survey Report

The Institute for Medicaid Innovation (IMI), a non-profit, nonpartisan Medicaid research and policy group, has just released its [annual Medicaid MCO survey report](#). The [annual Medicaid managed care survey](#) is one of the first comprehensive efforts to collect robust, longitudinal data on Medicaid managed care organizations (MCOs) in an effort to equip Medicaid stakeholders with the information needed to accurately articulate the national narrative about Medicaid managed care.

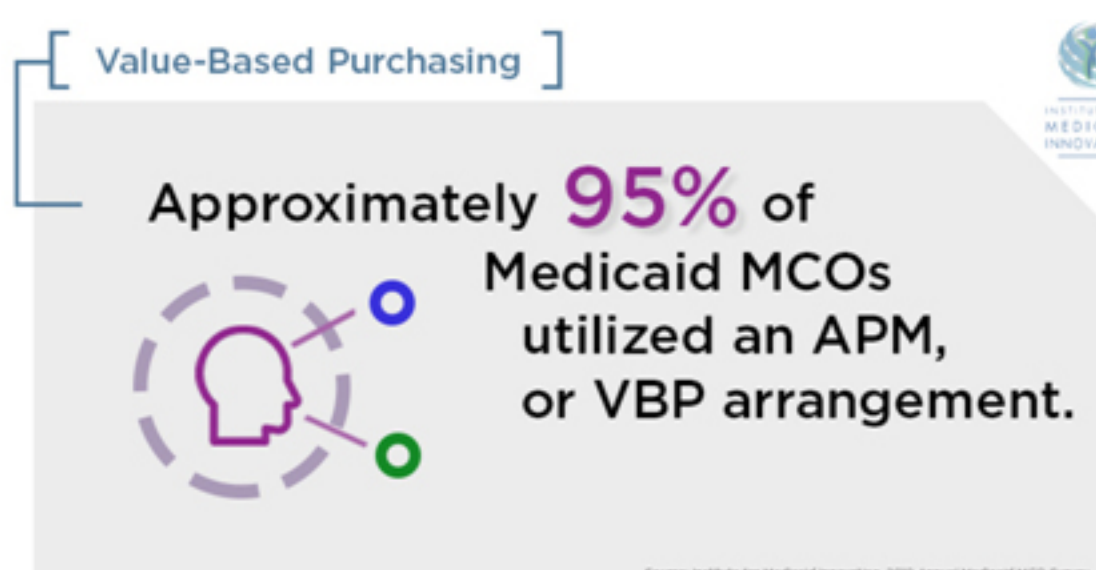
The survey collected information from Medicaid managed care organizations (MCOs) in eight critical categories, gauging the capabilities of the industry in these areas. Survey respondents represented **69% of all members in Medicaid managed care**.

Who responded to the survey?

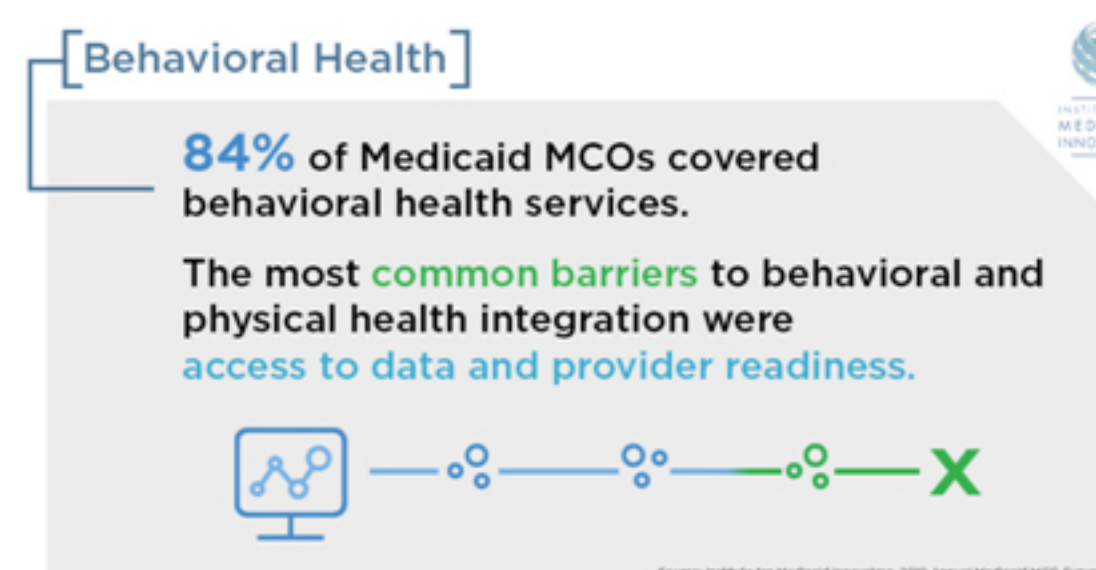


Of the MCOs that completed the survey, 39% were Medicaid MCOs with fewer than 250,000 covered lives, 28% were Medicaid MCOs with 250,001 to one million covered lives, and 33% were Medicaid MCOs with over one million covered lives.

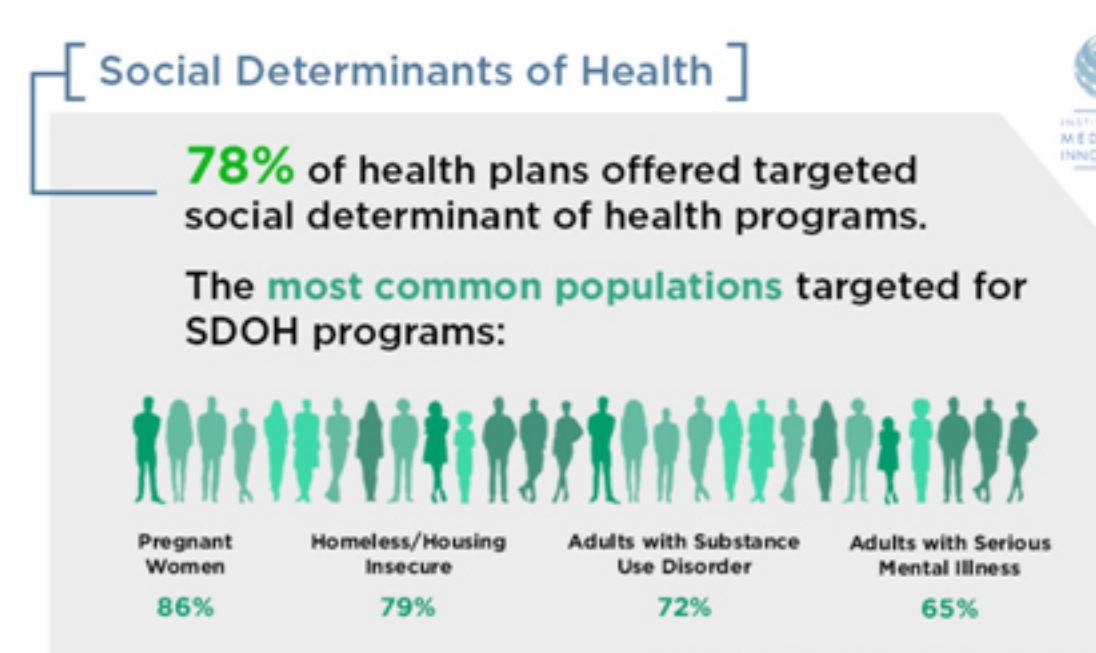
What are some of the notable findings from the survey?



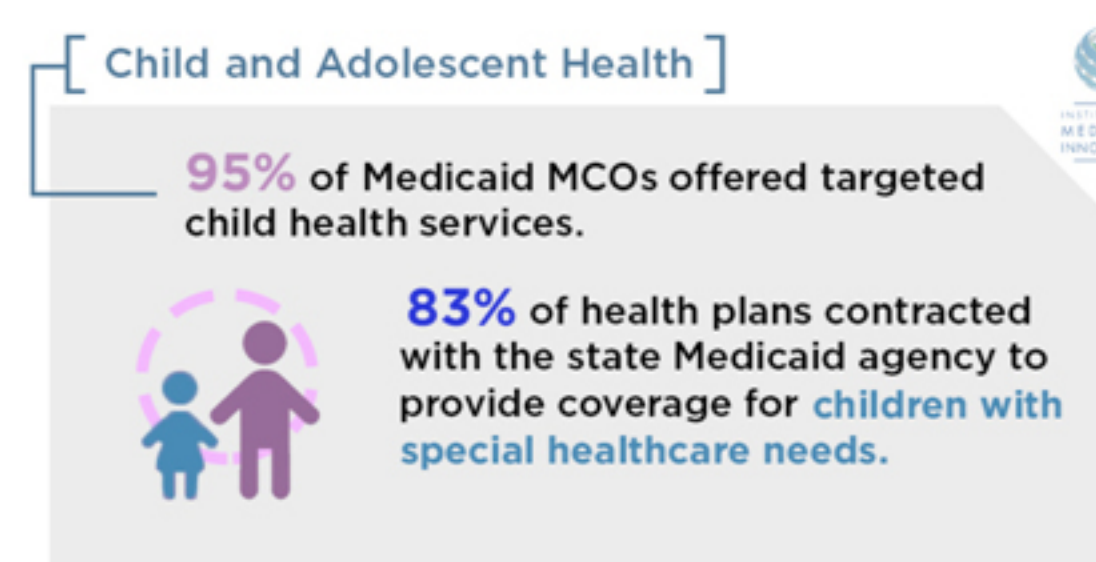
Results in the value-based purchasing category showed that the majority of Medicaid MCOs (95%) utilized an alternative payment model or value-based purchasing agreement in 2018, including incentive payments to providers for high-quality and cost-efficient care with 59% of Medicaid MCOs contracting directly with primary care providers. To learn more about the results from the survey on value-based purchasing, [click here](#).



Most Medicaid MCOs covered behavioral health services in 2018 and plans identified common barriers for behavioral and physical health integration. The most-referenced obstacle (88%) was data sharing limitations as a result of 42 CFR part 2. To learn more about the results from the survey on behavioral health, [click here](#).



The majority (78%) of Medicaid MCOs offered targeted social determinant of health programs in 2018 for members, with the most common populations being pregnant women, individuals who are housing insecure, and adults with substance use disorder. To learn more about the results from the survey on social determinants of health, [click here](#).



Nearly all health plans (95%) offered targeted child health programs in 2018, and more than 80% partnered with state Medicaid agencies to provide coverage for children with special health care needs (CSHCN). The vast majority of plans provided an array of supports including coordinating with social services (93%), developing a comprehensive plan of care with family members (86%), and helping to arrange appointments with providers (86%). To learn more about the results from the survey on child and adolescent health, [click here](#).

[Click here](#) to read and download the newly released 2019 Medicaid MCO survey report.

Support for this project is provided by the Robert Wood Johnson Foundation. The views expressed here do not necessarily reflect the views of the Foundation.