

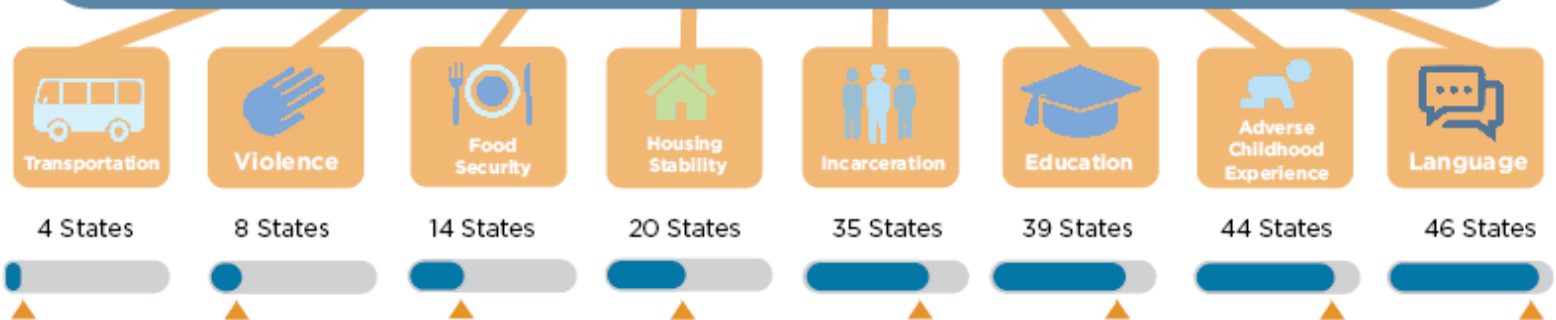
# Social Determinants of Health in State Medicaid Enrollment Forms

The Institute for Medicaid Innovation (IMI) conducted a content analysis of the Medicaid enrollment application form for each state to assess the extent to which social needs data were collected. As state Medicaid agencies, health plans, and community-based organizations design and implement interventions related to social determinants of health (SDOH), identifying the specific social needs of individuals at the point of enrollment in Medicaid has the potential to expedite the coordination of needed services and supports that will improve overall health outcomes. However, our analysis found that states varied in the type and number of specific social needs data collected. Furthermore, it is unknown whether these data are being transmitted to Medicaid stakeholders, such as health plans, as part of the EDI 834 file.

## Social Needs Data by the Numbers

- Medicaid enrollment forms collect information with direct or tangential relation to SDOH within **three major themes**: health status, eligibility status and SDOH.
- Inclusion of questions related to SDOH varied widely across states: Oregon asked the most with **21 questions** about SDOH while Missouri asked the least with **7 questions**.

## Social Determinant of Health Questions on State Medicaid Enrollment Forms



Collection of social needs data on the Medicaid enrollment form may facilitate early identification of health risk factors and referrals to targeted programs.

-  **Clinical Opportunities**
  - Explore potential clinical partnerships to address social factors.
  - Address data-sharing barriers to enhance early identification efforts.
-  **Research Opportunities**
  - Identify data collection that facilitates early identification of at-risk individuals.
  - Evaluate the effect of asking sensitive questions on the Medicaid enrollment form.
  - Explore the impact of integrating SDOH data into the EDI 834 file to enhance data sharing.
-  **Policy Opportunities**
  - Explore opportunities to adopt integrated social benefit form.
  - Evaluate inclusion of SDOH screening items on enrollment forms.

For more information, read IMI's full 2020 report, "Social Needs Data in the State Medicaid Enrollment Form: A Content Analysis." For a complete list of sources, please contact the Institute for Medicaid Innovation at [info@MedicaidInnovation.org](mailto:info@MedicaidInnovation.org)