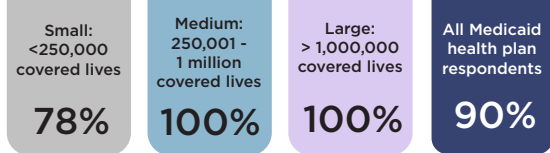




2022 Annual Medicaid MCO Survey Child and Adolescent Health

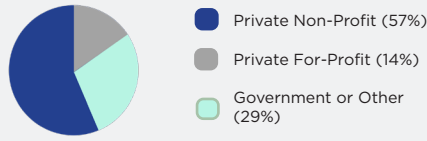
Percentage of Medicaid Health Plans Completing Survey in 2022 At-Risk for Child and Adolescent Health



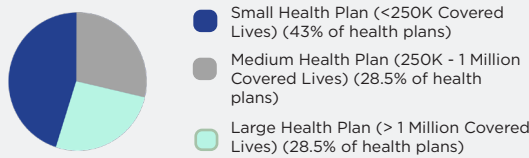
Methods and Overview

In its fifth year, the 2022 survey findings represent health plan data from almost every state with Medicaid managed care. The annual surveys collected information at the parent company/corporate levels and are intended to equip Medicaid stakeholders with the information needed to accurately articulate the national narrative about Medicaid managed care.

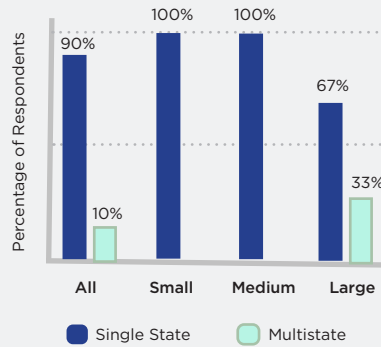
Health Plan Tax Status



Medicaid Health Plan Respondents by Size



Health Plan Markets



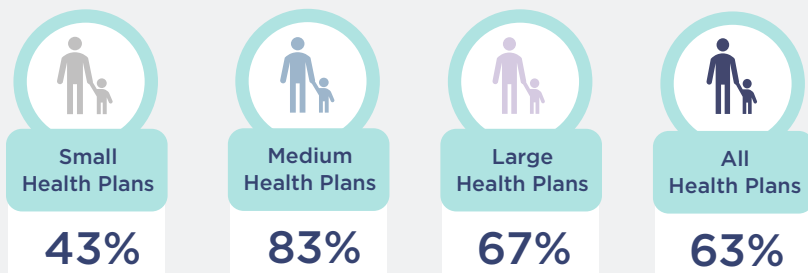
Source: Institute for Medicaid Innovation. "2022 Annual Medicaid Health Plan Survey."

Percentage of Medicaid Health Plans Completing Survey At-Risk for Child & Adolescent Health Coverage, by Year

	2017	2018	2019	2020	2021
All Health Plans	92%	95%	100%	95%	90%
Small Health Plans	100%	86%	100%	90%	78%
Medium Health Plans	86%	100%	100%	100%	100%
Large Health Plans	100%	100%	100%	100%	100%

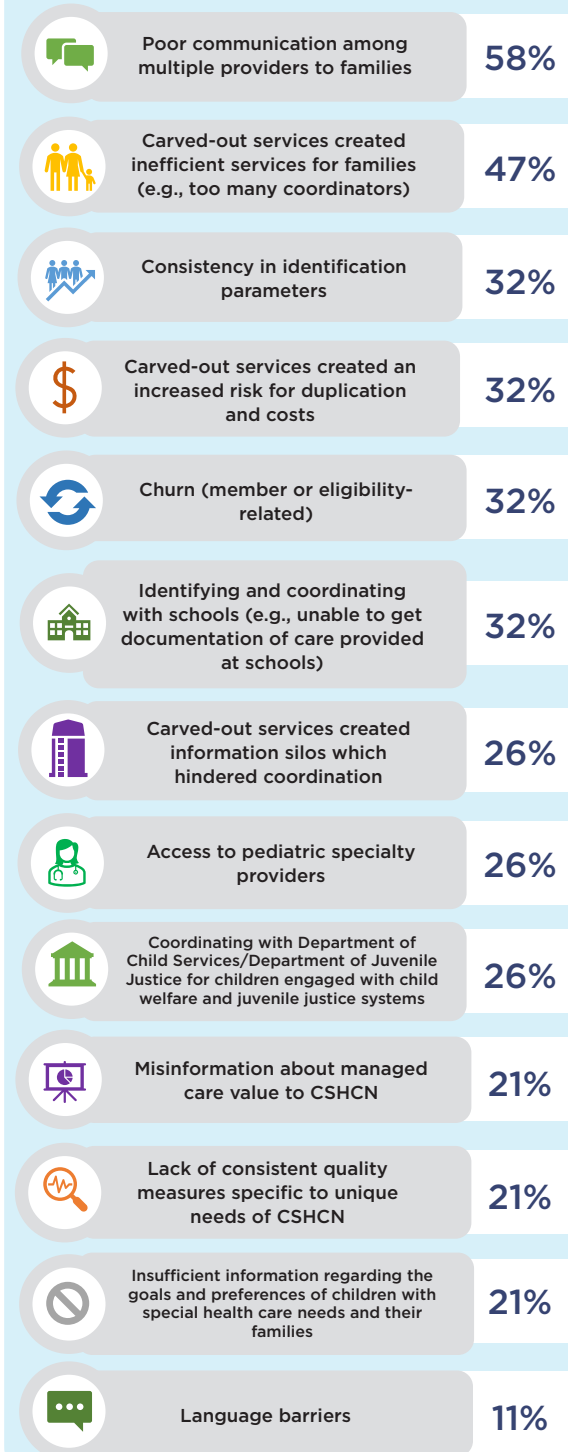
Source: Institute for Medicaid Innovation. "2022 Annual Medicaid Health Plan Survey."

Medicaid Health Plans Contracted for Children with Special Health Care Needs (CSHCN)



Source: Institute for Medicaid Innovation. "2022 Annual Medicaid Health Plan Survey."

Barriers Medicaid Health Plans Encountered when Serving Children with Special Health Care Needs (CSHCN)



Source: Institute for Medicaid Innovation. "2022 Annual Medicaid Health Plan Survey."



IMI 2022 Annual Medicaid MCO Survey | Child and Adolescent Health

Barriers Medicaid Health Plans Encountered when Serving Children with Special Health Care Needs (CSHCN)

Barriers	Small Health Plans	Medium Health Plans	Large Health Plans	All Health Plans
Inadequate communication and coordination among multiple providers	57%	67%	50%	58%
Carved-out services created inefficient services for families (e.g., too many coordinators)	29%	50%	67%	47%
Carved-out services created an increased risk for duplication and costs	0%	33%	67%	32%
Consistency in identification parameters	14%	50%	33%	32%
Identifying and coordinating with schools (e.g., unable to get documentation of care provided at schools)	0%	67%	33%	32%
Churn (member or eligibility-related)	14%	67%	17%	32%
Carved-out services created information silos which hindered coordination	0%	50%	33%	26%
Coordinating with Department of Child Services/Department of Juvenile Justice for children engaged with child welfare and juvenile justice systems	0%	50%	33%	26%
Access to pediatric specialty providers	14%	50%	17%	26%
Misinformation about managed care value to CSHCN	29%	17%	17%	21%
Lack of consistent quality measures specific to unique needs of CSHCN	29%	17%	17%	21%
Insufficient information regarding the goals and preferences of children with special health care needs and their families	29%	33%	0%	21%
Language barriers	0%	0%	33%	11%

Source: Institute for Medicaid Innovation. "2022 Annual Medicaid Health Plan Survey."

Barriers Medicaid Health Plans Encountered when Serving Children

Barriers	Small Health Plans	Medium Health Plans	Large Health Plans	All Health Plans
Identifying and coordinating with schools (e.g., unable to get documentation of care provided at schools)	29%	67%	100%	63%
Program fragmentation	29%	83%	67%	58%
Engaging family members to address social determinants of health	57%	50%	50%	53%
Churn (member or eligibility-related)	29%	67%	50%	47%
Coordinating with Department of Child Services/Department of Juvenile Justice for children engaged with child welfare or juvenile justice systems	29%	67%	50%	47%
Carved-out benefits	29%	50%	67%	47%
Engaging family members who are not enrolled in the same plan to address social determinants of health	14%	50%	67%	42%
Language barriers within families	29%	17%	83%	42%
Inability to find needed healthcare providers or beds	29%	33%	67%	42%
Barriers related to foster care system	14%	50%	50%	37%
Immigration status of parents/caregivers	0%	0%	17%	5%

Source: Institute for Medicaid Innovation. "2022 Annual Medicaid Health Plan Survey."