



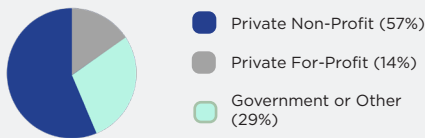
# 2022 Annual Medicaid MCO Survey

## Social Determinants of Health (SDOH)

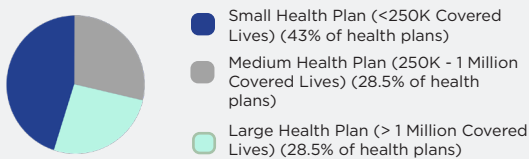
### Methods and Overview

In its fifth year, the 2022 survey findings represent health plan data from almost every state with Medicaid managed care. The annual surveys collected information at the parent company/corporate levels and are intended to equip Medicaid stakeholders with the information needed to accurately articulate the national narrative about Medicaid managed care.

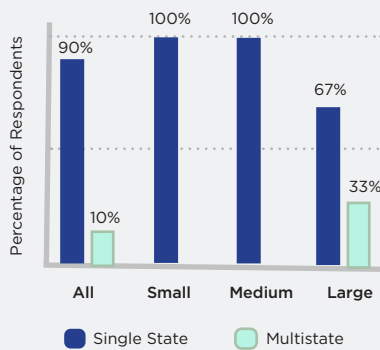
#### Health Plan Tax Status



#### Medicaid Health Plan Respondents by Size

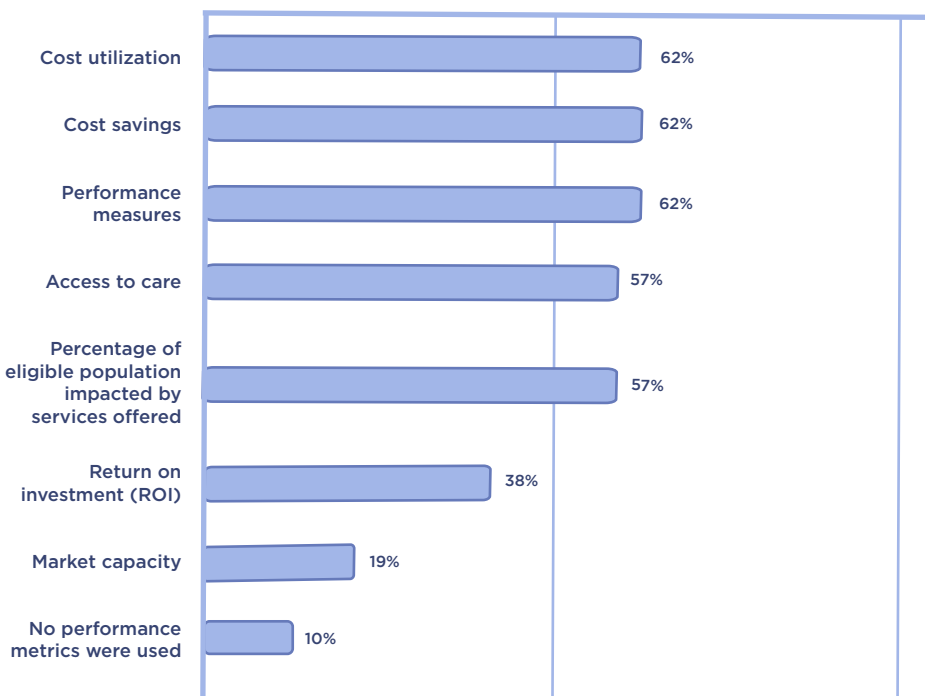


#### Health Plan Markets



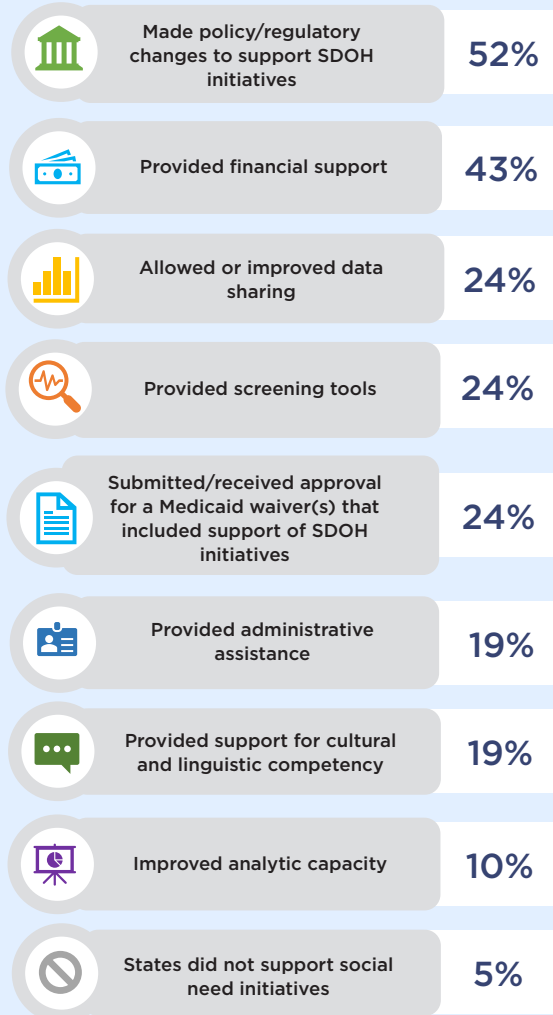
Source: Institute for Medicaid Innovation. "2022 Annual Medicaid Health Plan Survey."

### Metrics Used by Medicaid Health Plans to Assess and Evaluate SDOH Initiatives



Source: Institute for Medicaid Innovation. "2022 Annual Medicaid Health Plan Survey."

### How States Supported Medicaid Health Plan SDOH Initiatives



Source: Institute for Medicaid Innovation. "2022 Annual Medicaid Health Plan Survey."



Medicaid Health Plans with SDOH Programs for Specific Populations

Populations	Percentage of Health Plans
People experiencing homelessness/ housing insecurity	90%
Pregnant and postpartum Individuals	71%
Adults with substance use disorder	67%
Adults with disabilities (e.g., physical, intellectual, developmental)	67%
Adults with serious mental illness	67%
Aged, blind, and disabled	62%
Adults transitioning from institutions (e.g., nursing homes, assisted living facilities, rehabilitation)	57%
Medicare and Medicaid enrollees (duals)	52%
Criminal justice involved	48%
Child welfare/ Child protective services involved families	48%
Foster care youth/ Youth transitioning to adulthood	43%
CSHCN**	33%
Expansion members	33%
Sexual and gender minorities	33%
People with limited English proficiency	33%
Other*	33%
HIV/ AIDS	29%
Residential institution/ Facility placed individuals	29%
Individuals in Institutions for Mental Diseases (IMD)	10%

Notes: \*Write-in responses include: Indigenous populations, people with less than high school education, people with food insecurities, chronic diseases, people with increased blood lead levels

\*\*CSHCN - Children with special health care needs - Individuals (under age 18) who have or are at increased risk for chronic physical, developmental, behavioral, or emotional conditions and who also require health and related services of a type or amount beyond that required by children generally.

Source: Institute for Medicaid Innovation. "2022 Annual Medicaid Health Plan Survey."

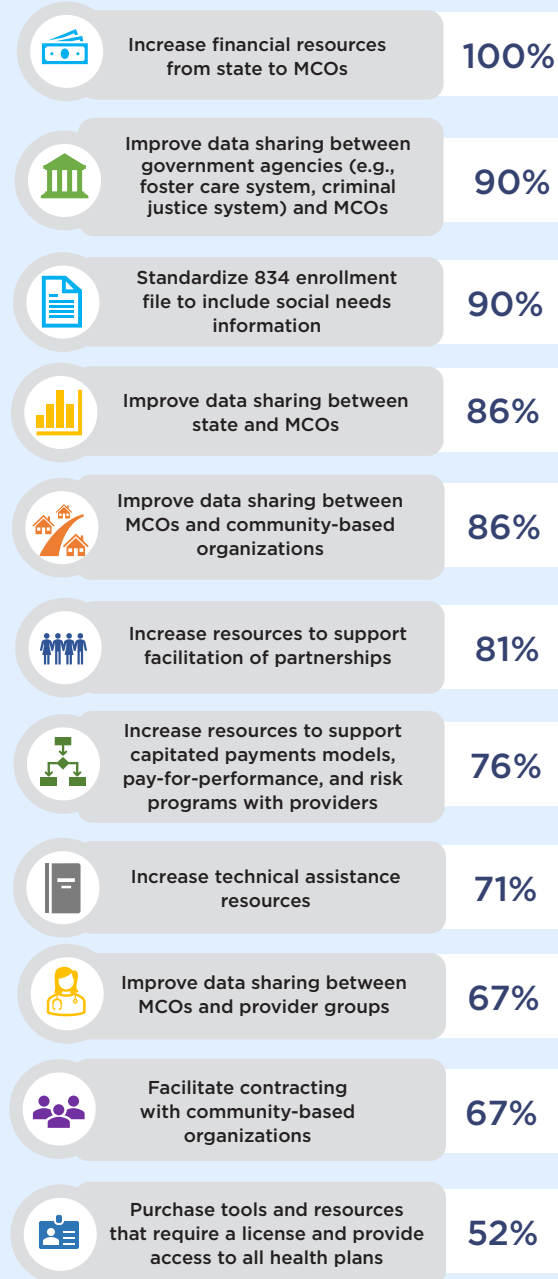
Medicaid Health Plan Use of SDOH Screening Tools

Screening Tool	Small Health Plans	Medium Health Plans	Large Health Plans	All Health Plans
Internally developed tool that is not based on one of the tools listed	44%	67%	50%	52%
Adaptation of one or more of the tools listed**	44%	33%	17%	33%
Tool(s) embedded in provider electronic health record	22%	33%	17%	24%
Protocol for Responding to and Assessing Patient Assets, Risks and Experiences (PRAPARE)	11%	0%	50%	19%
Vulnerability Index - Service Prioritization Decision Assistance Tool (VISPDAT)	11%	17%	17%	14%
CMS Accountable Health Communities Health-Related Social Needs Screening Tool	11%	17%	17%	14%
State-mandated tool	22%	0%	17%	14%

Note: \*\* Other tools not listed in table include: American Community Survey, The EveryOne project: Advancing health equity in every community, Toolkit by American Academy of Family Physicians, Social Needs Screening Toolkit, HealthLeads USA, Social Determinants Screening Tool, AccessHealth Spartanburg, Center for Health Care Strategies version, Self-Sufficiency Outcomes Matrix, OneCare Vermont, Center for Health Care Strategies version, Arizona Self-Sufficiency Matrix

Source: Institute for Medicaid Innovation. "2022 Annual Medicaid Health Plan Survey."

How State Medicaid Agencies Could Further Assist Medicaid Health Plans in Addressing SDOH Needs



Source: Institute for Medicaid Innovation. "2022 Annual Medicaid Health Plan Survey."