



Welcome to the April Newsletter

Get the latest on the following topics:

- Doula Learning and Action Collaborative Prepares for Launch
- Fourth Medicaid MCO Redetermination Survey Fact Sheet Released
- Midwifery in Medicaid Business Case Learning Series Explores Contracting Strategies for Midwives
- Help us Improve the Nation's Medicaid Program

IMI Announcement

Doula Learning and Action Collaborative Prepares for Launch

Yesterday, the Institute for Medicaid Innovation (IMI) announced our upcoming national [Doula Learning and Action Collaborative](#). The planning phase was funded by the [Pritzker Children's Initiative](#).

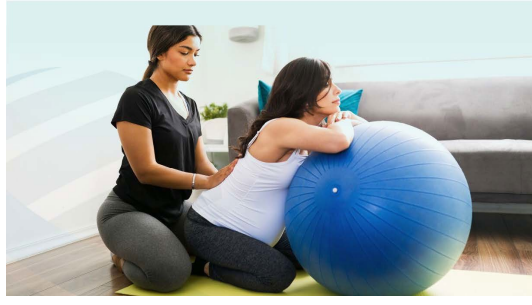
IMI will open the application process in the coming days, and we'll announce specific dates for an informational webinar and due dates for the optional interest form and application. This summer, IMI will announce the teams that are selected, and later this year, the Doula Learning and Action Collaborative will officially launch.

To be sure you are the first to get updates, [sign up](#) for IMI's announcements and monthly newsletter. Until then, we encourage you to start forming a collaborative team and begin preparing information to submit with your application.



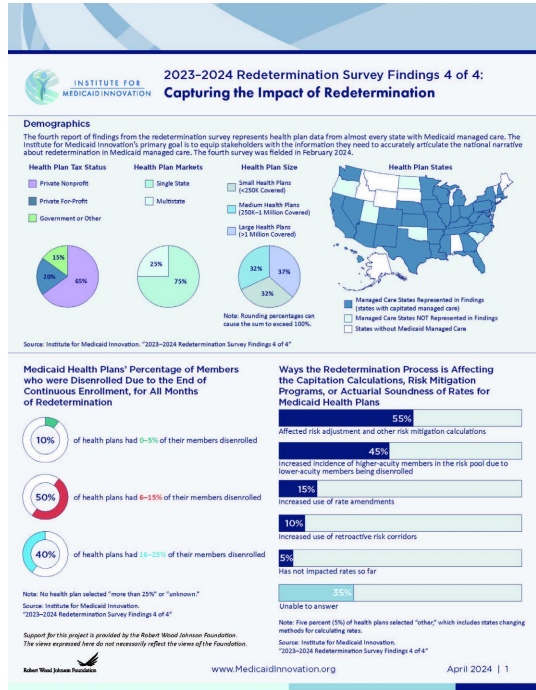
National Doula Learning and Action Collaborative: An Overview

Application Opens: Spring 2024



Recent IMI Release

Fourth MCO Redetermination Survey Fact Sheet Available



The Institute for Medicaid Innovation (IMI) recently released the latest edition in its series of fact sheets about the national Medicaid MCO redetermination process. The survey series, funded by the [Robert Wood Johnson Foundation](#), provides an in-depth view of health plans' responses regarding risk mitigation, disenrollment, and outreach.

The [fact sheet](#) contains results of the fourth MCO redetermination survey, which was fielded in February 2024. Learn how health plans are navigating the effects of Medicaid redetermination on their members and discover the most common approaches states took to support MCOs.

Community Power Building

Midwifery in Medicaid Business Case Learning Series Explores Contracting Strategies for Midwives

What are the opportunities and strategies that midwives can use as they develop contracts with Medicaid managed care organizations? These topics and more were explored recently during the 12th of 15 sessions in this learning series, which is funded by the [Skyline Foundation](#).



The panelists for this latest session featured Marnie Cabezas, former certified professional midwife and chief executive officer, [Innovation Billing Service](#), a division of [Revascent](#); James Glauber, MD, MPH, director of research, learning and evaluation, [Project Open Hand](#), and former chief medical officer at [San Francisco Health Plan](#); and Esther Macchione, MBA, cofounder and principal, [Prestige Health](#).

The series is designed to increase understanding of Medicaid payment structures, explain how to research factors relevant to a local market, and build business skills and resources to advance birth equity.

Participants are midwives and students who are learning how they can maximize Medicaid reimbursement to support the sustainability of midwifery services and build business cases to expand access to in-demand, community-based maternal care models in their communities. The series builds on earlier IMI work, including the [Essential Elements for a Maternal Health Initiative Business Case](#).

Support IMI

Help us Improve the Nation's Medicaid Program!

Millions of working families depend on Medicaid for access to physical and behavioral health care, which is why the Institute for Medicaid Innovation is dedicated to ensuring that *everyone* has access to the coverage and care they need.

By way of our research, reports, fact sheets, and interviews with key Medicaid providers, stakeholders, and enrollees, we provide people who hold the keys to change with critical information, data, and ideas about how Medicaid can evolve and expand to provide families and individuals with the health care they need to thrive. The Institute for Medicaid Innovation is currently funded 100% by research grants, contracts, and private donations. We do not lobby or advocate, and we are not a membership-based or trade association. We need your help to keep doing this important work.

Please consider making a tax-deductible contribution today.

Together, we can help improve the nation's Medicaid program.



It's not the statistics that make Medicaid real.



It's when you love one of the numbers.

Did you receive this newsletter from a friend and want more? [Join our mailing list!](#)

Institute for Medicaid Innovation
1250 Connecticut Ave, NW, Suite 700
Washington, D.C. 20036

info@MedicaidInnovation.org



The Institute for Medicaid Innovation (IMI) is a 501(c)3 national nonprofit, nonpartisan research and policy organization focused on providing evidence of innovative solutions that address important clinical, research, and policy issues in Medicaid through multi-stakeholder engagement, research, data analysis, education, learning collaboratives, quality improvement initiatives, and dissemination and implementation activities. IMI is not a membership or trade association and is funded exclusively through research grants and contracts.