

## Welcome to the August IMI Newsletter

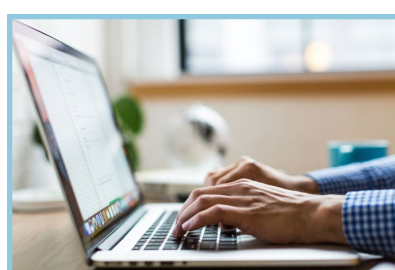
Get the latest on the following topics:

- IMI Unveils First MCO Redetermination Survey Findings
- IMI to Host First Health Policy Equity Summit Next Month
- Upcoming Medicaid Guidance Document on Doulas and Perinatal Community Health Workers
- IMI a Featured Speaker at National Academies Maternal Health Workshop

## New IMI Resource

### IMI Unveils First MCO Redetermination Survey Findings

With support from the [Robert Wood Johnson Foundation](#), IMI has released the results from a first-of-its-kind, national survey capturing insights on the evolution of barriers, challenges, and successes health plans are experiencing related to Medicaid redetermination.



The first in a four-part-series, the survey provides information that can be used to inform federal and state policymakers.

[Learn more](#)

## Upcoming IMI Event



### IMI to Host First Health Policy Equity Summit Next Month

IMI and the [Aspen Institute](#) will host a Medicaid Policy Summit September 28–29, 2023 in Washington, D.C.

The [Maternal Health Policy Equity Summit](#) will bring together thought leaders and change agents who will foster collaboration and generate innovative ideas for shaping Medicaid policies. The goal of the invitation-only summit is to establish a national, five-year strategic policy plan to support increased access to and coverage of evidence-based maternal health services and supports.

## Upcoming Report

### Upcoming Medicaid Guidance Document on Doulas and Perinatal Community Health Workers

Last month, IMI concluded its eight-part learning series on doulas and perinatal community health workers in collaboration with [Every Mother Counts](#) (EMC), a project funded by [Community Health Acceleration Partnership](#) and EMC.



IMI and EMC are now working on a comprehensive report that will compile lessons learned from the eight-month, 1,000-participant learning series.

Access materials and archived recordings from the learning series [here](#).

## IMI Hits the Road



### IMI a Featured Speaker at National Academies Maternal Health Workshop

IMI's founding executive director **Dr. Jennifer Moore, PhD, RN, FAAN**, (she/her) presented information on evidence-based models of maternal care at the Workshop on Advancing Diagnostic Excellence for Maternal Health Care hosted by the National Academies.

Supported by the [Gordon and Betty Moore Foundation](#) and [the Commonwealth Fund](#), the workshop brought together experts and key stakeholders to examine opportunities for improving diagnosis in maternal health care

The presentation details the research, clinical, and policy opportunities available in the realms of midwifery-led care, doulas in Medicaid, and maternal mental health.

Learn more about the July 26th workshop and view an archived recording [here](#).

## ICYMI

Learn about Medicaid coverage of and billing for doula and community health worker care through the archived recording below:

### Doula & Perinatal Community Health Worker in Medicaid Session #8: "Operationalizing Medicaid Coverage for Perinatal Support and the Nitty Gritty of Billing"

This session examines considerations for billing and benefit design to maximize successful Medicaid reimbursement for community-based doulas and perinatal community health workers using examples from states and discussing infrastructure, systems, and process of support.

The panel of **Kenda Sutton-EI** (she/her), Birth in Color RVA and **Bobbie Monagan** (she/her), AmeriHealth Caritas District of Columbia was moderated by **Dr. Caitlin Cross Barnett** (she/her), PhD, Centers for Medicare and Medicaid Services.

[Watch](#)

It's not the statistics that make Medicaid real.



It's when you love one of the numbers.

Did you receive this newsletter from a friend and want more? [Join our mailing list!](#)

Institute for Medicaid Innovation  
1250 Connecticut Ave, NW, Suite 700  
Washington, D.C. 20036

[info@MedicaidInnovation.org](mailto:info@MedicaidInnovation.org)



The Institute for Medicaid Innovation (IMI) is a 501(c)3 national nonprofit, nonpartisan research and policy organization focused on providing evidence of innovative solutions that address important clinical, research, and policy issues in Medicaid through multi-stakeholder engagement, research, data analysis, education, learning collaborative, quality improvement initiatives, and dissemination and implementation activities. IMI is not a membership or trade association and is funded exclusively through research grants and contracts.