

Welcome to the December Newsletter

Get the latest on the following topics:

- Support the Work of IMI this Holiday Season!
• 2023 Annual Medicaid MCO Survey Findings Now Available!
• New Report Highlights Effective State Efforts Improving Perinatal Care
• Diagnostic Excellence Workshop Proceeding Detailed in Report
• IMI's Work Featured in New Federal Guidance
• Work with IMI

Support the Work of IMI this Holiday Season!



IMI is working hard to improve physical and behavioral health outcomes for Medicaid enrollees across the nation, and to increase access to Medicaid. And YOU can help.

IMI is currently funded 100% by research grants, contracts, and private donations. We do not lobby or advocate, and IMI is not a membership-based or trade association. We need your help to keep our work going.

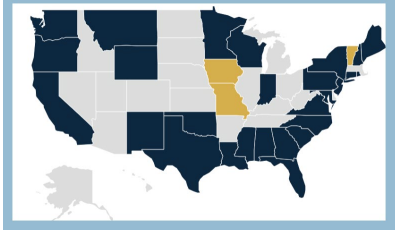
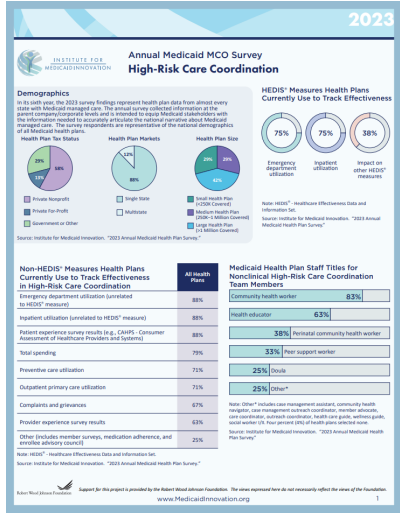
Please consider making a tax-deductible contribution to IMI today, to help ensure we can continue doing this important work!

New Resources

2023 Annual Medicaid MCO Survey Findings Now Available!

In its seventh year, the 2023 survey findings represent health plan data from almost every state with Medicaid managed care. The annual survey collects information at the parent company/corporate level and is intended to equip Medicaid stakeholders with the information needed to accurately articulate the national narrative about Medicaid managed care.

The fact sheets and a recording of the release event are available now.



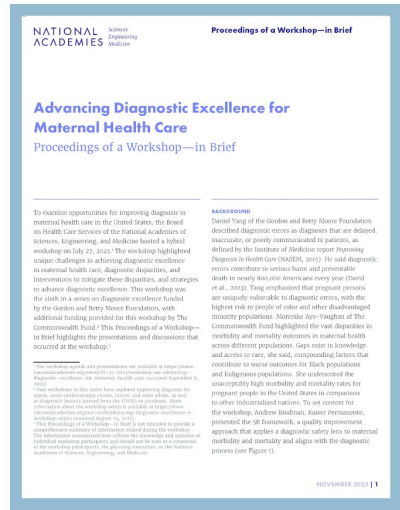
New Report Highlights Effective State Efforts Improving Perinatal Care

With maternal mortality rates rising across the U.S., states have begun exploring and implementing policies to improve maternal health care. IMI authors Rebecca Johnson, MA, MPH (she/her) and Gloria Eldridge, PhD (she/her), with partnership and support from The Commonwealth Fund, outline the current status of perinatal policy changes to better identify the trends and gaps in this critical area.

Read the report and view the state map here.

Diagnostic Excellence Workshop Proceeding Detailed in Report

A new report highlights the key findings of the Advancing Diagnostic Excellence for Maternal Health Care Workshop Proceedings hosted by the National Academies earlier this year. IMI founding executive director Jennifer Moore, PhD, RN, FAAN (she/her), describes evidence-based models of maternal health care in Medicaid. The report and materials are available here.



IMI in the News

IMI's Work Featured in New Federal Guidance

The Health Care Payment Learning & Action Network, a group of public and private health care leaders dedicated to providing thought leadership, strategic direction, and ongoing support to accelerate our care system's adoption of alternative payment models, established the Health Equity Advisory Team (HEAT) to help identify and prioritize opportunities to advance health equity through alternative payment models. New HEAT guidance includes real-world examples and provides recommendations for health care entities involved in the design and implementation of payment methods to establish, support, and sustain meaningful, bi-directional partnerships with community-based organizations. IMI's Value of Investing in Social Determinants of Health Toolkit, supported by the Episcopal Health Foundation, is featured in the guidance.



IMI Governing Board member Karen Dale, MSN, RN (she/her) serves as a co-chair of the HEAT and IMI founding executive director Jennifer Moore, PhD, RN, FAAN (she/her) serves as a member.

Work with IMI

Director of Operations and Strategic Business Development

Join a mission-driven team passionate about improving individuals' health and lives. IMI is looking for a new Director of Operations and Strategic Business Development who will shape the future of the organization.

As a member of the senior leadership team and second in command for the organization, the director of operations and strategic business development is responsible for linking all projects, programs, and portfolios to strategic and operational business plans while overseeing the implementation of a common approach.

Learn More

It's not the statistics that make Medicaid real.



It's when you love one of the numbers.

Did you receive this newsletter from a friend and want more? Join our mailing list!

Institute for Medicaid Innovation
1250 Connecticut Ave, NW, Suite 700
Washington, D.C. 20036

info@MedicaidInnovation.org



The Institute for Medicaid Innovation (IMI) is a 501(c)3 national nonprofit, nonpartisan research and policy organization focused on providing evidence of innovative solutions that address important clinical, research, and policy issues in Medicaid through multi-stakeholder engagement, research, data analysis, education, learning collaboratives, quality improvement initiatives, and dissemination and implementation activities. IMI is not a membership or trade association and is funded exclusively through research grants and contracts.