

Welcome to the July edition of the IMI Newsletter

Get the latest on the following topics:

- New Tools Coming for Advancing SDOH Investments
- Survey Examines Effects of Redetermination
- A Deeper Dive on Updating CDPS Risk Adjustment Model
- Site Visit Spotlights Community-Led Midwifery Efforts
- IMI Presents at HRSA Advisory Committee on Maternal Child Health
- IMI Provides Insight from Surveys at ACAP CEO Summit

Coming Soon

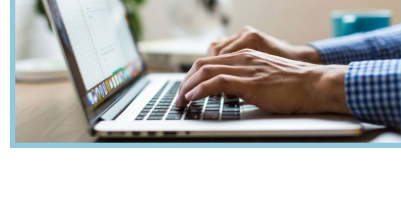
IMI is excited to share several new resources that will be released in the coming weeks.

New Tools Coming for Advancing SDOH Investments

Supported with funding from the [Episcopal Health Foundation](#), the Institute for Medicaid Innovation will soon unveil a toolkit to help advance Medicaid health plan investments in SDOH.



Phase one of this multi-phase project will offer tools to support authentic partnerships between community-based organizations and Medicaid health plans that will be released later this month. Future phases will provide tools to support business case development including the social and financial return on investment, how best to operationalize implementation strategies, and opportunities to mitigate barriers.



Survey Examines Effects of Redetermination

With support from the [Robert Wood Johnson Foundation](#), IMI launched a national longitudinal survey to capture information about the impact of the reinstatement of the Medicaid redetermination process.

The survey results will provide insight on the evolution of barriers and successes health plans are experiencing to inform federal and state policies.

The first fact sheet detailing the results will be released later this month. Learn more about the project [here](#).

A Deeper Dive on Updating CDPS Risk Adjustment Model

Earlier this year, IMI and the University of California, San Diego released the first major update to the Medicaid risk adjustment model in more than a decade. Now IMI is planning to release a new Q & A resource based on submitted inquiries during the live webinar that will provide more in-depth information for Medicaid health plans and state Medicaid agencies.



Learn more about the updated model [here](#).

IMI Hits the Road

IMI has been busy presenting key findings and leading community power building endeavors.



Site Visit Strengthens Community-Led Midwifery Efforts

Team Washington of the Midwifery Learning Collaborative (MLC) gathered in-person with IMI to celebrate milestones and identify next steps for the team.

Funded by the [W.K. Kellogg Foundation](#), the MLC is a unique program that convenes key stakeholders including state Medicaid agencies, Medicaid health plans, provider groups, and community-based organizations for a three-year collaboration.

The meeting was an opportunity to strengthen relationships, map out the ways in which pregnant/birthing people are engaging in midwifery models of care, and prioritize people and communities who are underrepresented in midwifery models of care

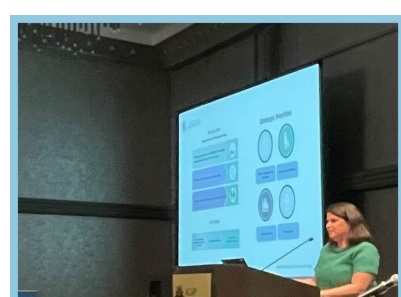
Learn more about the Midwifery Learning Collaborative [here](#).

IMI Presents at HRSA Advisory Committee on Maternal Child Health

IMI's founding executive director **Dr. Jennifer Moore, PhD, RN, FAAN**, (she/her) presented information on IMI's extensive portfolio on maternal and child health in Medicaid to the Health Resources and Services Administration (HRSA) Advisory Committee on Infant and Maternal Mortality in June. The presentation included an overview of key findings from IMI's rich, wide-ranging maternal health research, resources, tools, and national community power-building initiatives. The presentation helped to inform the Committee's future priority areas and recommendations to the Secretary of the Department of Health and Human Services.



Learn more about IMI's maternal health research and reports [here](#).

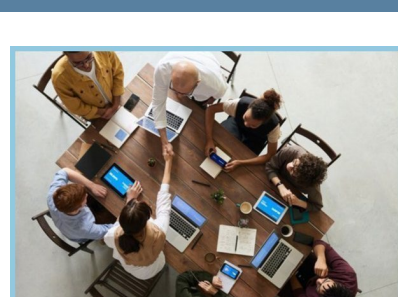


IMI Provides Insight on Redetermination at ACAP CEO Summit

IMI's founding executive director **Dr. Jennifer Moore, PhD, RN, FAAN**, (she/her) served on a panel last month with colleagues from CMS, presenting information on IMI's annual Medicaid MCO survey, funded by RWJF, and the soon to be released redetermination survey. The panel included opportunities to answer important questions about how Medicaid health plans are responding to the end of the COVID-19 public health emergency and subsequent redetermination to an audience of health plan leadership and Centers for Medicare and Medicaid staff.

Upcoming Engagements

Are you interested in learning more about the work of IMI? Join us **virtually and in-person** at one of the many events, meetings, and conferences across the United States! Check the list of events below for upcoming speaking engagements and archived recordings.



National Academies of Sciences, Engineering, and Medicine: Workshop on Advancing Diagnostic Excellence for Maternal Health Care

IMI founding executive director **Dr. Jennifer Moore, PhD, RN, FAAN** (she/her) will present key findings on the impact of state variation in Medicaid coverage and access. The free, public workshop convenes experts and key stakeholders to examine the current scientific landscape and opportunities for improving diagnosis in maternal health care.

July 27, 2023

Irvine, California and virtual

[Learn more](#)

ICYMI

Watch and listen to the archived recording for the event below:

Doula & Perinatal Community Health Worker in Medicaid Session #7: "Building the Doula and Perinatal Community Health Worker Workforce and Collaborative Systems of Support"

This session explores examples of collaboration between members of the community-based perinatal support workforce and other service providers, while identifying ways that states can support the workforce through alignment of core competencies and pathways.

The panel of **Bridgette Jerger, CLC, CD (DONA)**, G.R.O.W. Doula/Healthy Start (she/her); **Mary Powel-Thomas**, By My Side Birth Support, (she/her); **Tasia Stewart, Doula, PHA, CBS**, Birthmark Doula Collective (she/her); and **Steph Vasquez**, Birthmark Doula Collective (they/them); was moderated by **Kim Bower, MD, FAAHPM, HMDC**, Blue Shield of California Promise Health Plan

[Learn more](#)

Get Involved

There are numerous topics and projects that IMI's committees are actively tackling. Are you interested in joining the discussion? Email us at info@MedicaidInnovation.org.

- **Dissemination & Implementation Committee**
 - Annual Medicaid MCO Survey sections: High Risk Care Coordination, Alternative Payment Models, Pharmacy, MLTSS
 - Innovations & Perinatal and Child Health in Medicaid
 - Implementation of Doulas; Perinatal Community Health Workers
- **Behavioral Health Subcommittee**
 - Perinatal mental health
 - Integrated behavioral health models in Medicaid
 - Annual Medicaid MCO Survey sections: Behavioral Health, Pharmacy
- **Child & Adolescent Health Subcommittee**
 - Annual Medicaid MCO Survey sections: High Risk Care Coordination, Alternative Payment Models, Pharmacy, MLTSS
 - Innovations & Perinatal and Child Health in Medicaid
 - Medicaid considerations for implementing the AAP Clinical Practice Guideline for the Evaluation and Treatment of Children and Adolescents with Obesity
 - Elevating the voice of youth and families with Medicaid health insurance
- **Women & Gender Health Subcommittee**
 - Annual Medicaid MCO Survey section: Sexual & Reproductive Health
 - Medicaid Policy Summit topics: Perinatal Mental Health, Prenatal-to-3, Midwifery-led models of care, and Doulas and Perinatal Community Health Workers
- **Data & Research Committee**
 - Annual Medicaid MCO Survey
 - Redetermination Survey Series
 - Collection and use of sexual orientation / gender identity data
 - Exploring equitable access to coverage and care.
- **Medicaid MCO Survey Subcommittee**
 - Annual Medicaid MCO Survey
 - Redetermination Survey Series
- **Social Determinants of Health Committee:**
 - Annual Medicaid MCO Survey section: Social Determinants of Health
 - Value of SDOH Investments Toolkit: Phase 1
 - SDOH Data Gaps
 - Housing/Individuals experiencing homelessness
 - Community Health Workers

It's not the statistics that make Medicaid real.



It's when you love one of the numbers.

Did you receive this newsletter from a friend and want more? [Join our mailing list!](#)

Institute for Medicaid Innovation
1250 Connecticut Ave, NW Suite 700
Washington, D.C. 20036

info@MedicaidInnovation.org



The Institute for Medicaid Innovation (IMI) is a 501(c)3 national nonprofit, nonpartisan research and policy organization focused on providing evidence of innovative solutions that address important clinical, research, and policy issues in Medicaid through multi-stakeholder engagement, research, data analysis, education, learning collaboratives, quality improvement initiatives, and dissemination and implementation activities. IMI is not a membership or trade association and is funded exclusively through research grants and contracts.

Manage your preferences | [Opt Out](#) using TrueRemove™
Got this as a forward? [Sign up](#) to receive our future emails.
[View this email online](#)

P.O. Box 40619 | Washington, DC 20016 US

This email was sent to .
To continue receiving our emails, add us to your address book.

emma