



# Welcome to the November Newsletter

Get the latest on the following topics:

- Join Us for the Annual Medicaid MCO Survey Release Event
- New Report Details Critical Doula and Perinatal Findings from Learning Series
- Second Round of MCO Redetermination Survey Results Available
- Toolkit Shows Business Case for Partnering with Community-Based Organizations

## Upcoming IMI Event



### Join Us for the Annual Medicaid MCO Survey Release Event

On Friday, November 17th, please join the Institute for Medicaid Innovation for an overview of and expert panel on trends in Medicaid access and coverage.

Learn more about key results from the 2023 Medicaid Managed Care Organization Survey and what it means for Medicaid members, health plans, policymakers, and administrators. Expert panelists will give their reactions to the findings in this one-of-a-kind survey.

Thank you to [Robert Wood Johnson Foundation](#) for their generous support of this project.

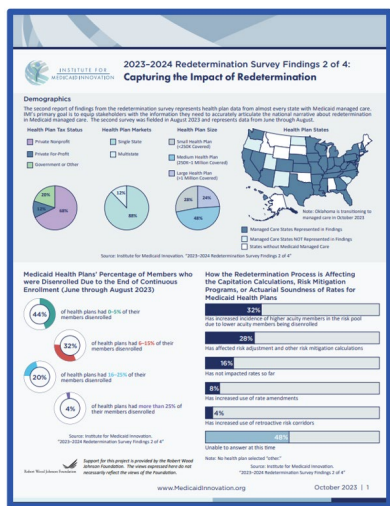
## New IMI Releases

### New Report Details Critical Doula and Perinatal Findings from National Learning Series

The Institute for Medicaid Innovation and [Every Mother Counts](#) have partnered to [release a report](#) detailing the findings from a recent, nationwide learning series focusing on doulas and perinatal community health workers.



The report, developed with support from the [Community Health Acceleration Partnership](#), aims to support the creation and strengthening of pathways for Medicaid agencies and health plans, provider groups, and professional associations to expand access to quality, respectful, and equitable maternity care.



### Second Round of MCO Redetermination Survey Results Available

The second round of results from the Institute for Medicaid Innovation's latest MCO redetermination survey is now available. The new, national project captures information that can be used to inform federal and state policymakers and other Medicaid stakeholders.

The survey, fielded with support from [the Robert Wood Johnson Foundation](#), provides insight on the evolution of barriers, challenges, and successes health plans are experiencing related to the redetermination process.

Access latest results [here](#).

### New Toolkit Demonstrates Business Case for Partnering with Community-Based Organizations

The Institute for Medicaid Innovation has released a [social determinants of health \(SDOH\) toolkit](#) to help advance investments in community based organizations. The toolkit helps Medicaid managed care organizations make the business case for deepening these relationships with community members. Phase 1, which is funded by the [Episcopal Health Foundation](#), offers tools to support authentic partnerships with community-based organizations. Future phases will provide tools to address implementation strategies and mitigate barriers.



It's not the statistics that make Medicaid real.



It's when you love one of the numbers.

Did you receive this newsletter from a friend and want more? [Join our mailing list!](#)

Institute for Medicaid Innovation  
1250 Connecticut Ave, NW, Suite 700  
Washington, D.C. 20036

[info@MedicaidInnovation.org](mailto:info@MedicaidInnovation.org)



The Institute for Medicaid Innovation (IMI) is a 501(c)3 national nonprofit, nonpartisan research and policy organization focused on providing evidence of innovative solutions that address important clinical, research, and policy issues in Medicaid through multi-stakeholder engagement, research, data analysis, education, learning collaboration, and policy issues in Medicaid through dissemination and implementation activities. IMI is not a membership or trade association and is funded exclusively through research grants and contracts.

