

## Welcome to the October IMI Newsletter

Get the latest on the following topics:

- IMI Hosts Summit to Improve the Nation’s Medicaid Maternal Health Landscape
- New Toolkit: Making the Business Case for Social Determinants of Health
- IMI Presents at National Medicaid Leadership Conference

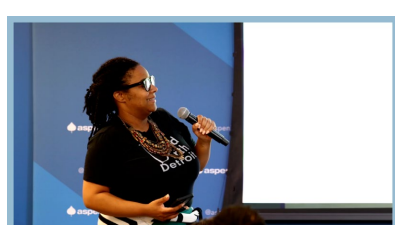
### Recent IMI Event



#### IMI Hosts Summit to Improve the Nation’s Medicaid Maternal Health Landscape

IMI and the [Aspen Institute](#) hosted the first ever Maternal Health Policy Equity Summit September 28–29, 2023 in Washington, D.C.

The invitation-only [event](#) brought together a coalition of 80 thought leaders and change agents who collaborated for two days to identify five “big ideas” to change the trajectory of maternal health for people covered by Medicaid. These big ideas will serve as the foundation for a national, five-year strategic Medicaid policy plan to support increased access to and coverage of evidence-based maternal health services and supports.



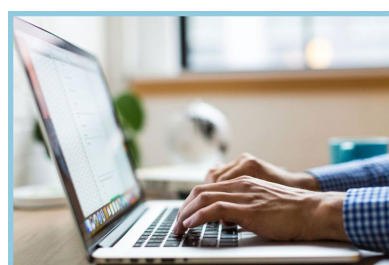
None of this would be possible without the generous support of our summit sponsors: [Aetna](#), [Burke Foundation](#), [California Health Care Foundation](#), [Commonwealth Fund](#), [Community Health Acceleration Partnership](#), [David & Lucile Packard Foundation](#), [Funders for Birth Justice & Equity](#), [Irving Harris](#)

[Foundation](#), [Jewish Healthcare Foundation](#), [Klingenstein Philanthropies](#), [Merck For Mothers](#), [Perigee Fund](#), [Pritzker Foundation](#), [Robert Wood Johnson Foundation](#), [Skyline Foundation](#), and [W.K. Kellogg Foundation](#).

### New IMI Release

#### Making the Business Case for Social Determinants of Health– New Toolkit Available

IMI has released a [social determinants of health \(SDOH\) toolkit](#) to help advance investments made by Medicaid health plans and community-based organizations in this important area. Phase 1, which is funded by the [Episcopal Health Foundation](#), offers tools to support authentic partnerships with community-based organizations. Future phases will provide tools to support the business case, address implementation strategies, and mitigate barriers.



### IMI on the Road

#### IMI Presents at National Medicaid Leadership Conference

September 20-22 | Alexandria, VA

IMI Founding Executive Director **Dr. Jennifer Moore, PhD, RN, FAAN** presented several times alongside other national Medicaid experts at the annual Council of State Governments (CSG) Medicaid Leadership Academy hosted by the Centers for Medicare and Medicaid Services (CMS). The presentations detailed lessons learned from the [Robert Wood Johnson Foundation](#)-funded Annual MCO and Redetermination surveys, including what innovative strategies MCOs are taking to address Medicaid disenrollment following the unwinding of the Covid Public Health Emergency. The CSG Medicaid Leadership Academy is tailored for members of the legislative and executive branches who are well versed in the intricacies of Medicaid policy and are interested in further discussion and examination of the issues.

[Learn more.](#)

**It’s not the statistics that make Medicaid real.**



**It’s when you love one of the numbers.**

Did you receive this newsletter from a friend and want more? [Join our mailing list!](#)

Institute for Medicaid Innovation  
1250 Connecticut Ave, NW, Suite 700  
Washington, D.C. 20036

[info@MedicaidInnovation.org](mailto:info@MedicaidInnovation.org)



The Institute for Medicaid Innovation (IMI) is a 501(c)3 national nonprofit, nonpartisan research and policy organization focused on providing evidence of innovative solutions that address important clinical, research, and policy issues in Medicaid through multi-stakeholder engagement, research, data analysis, education, learning collaboratives, quality improvement initiatives, and dissemination and implementation activities. IMI is not a membership or trade association and is funded exclusively through research grants and contracts.