

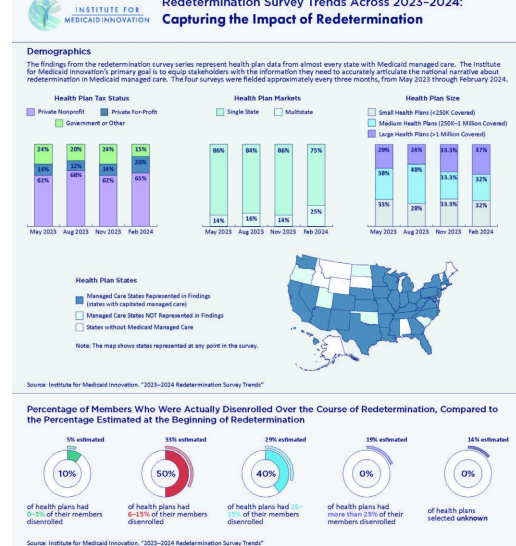
Welcome to the May Newsletter

Get the latest on the following topics:

- New Fact Sheet Summarizes Trends in Medicaid MCOs' Redeterminations
- Help Inform IMI's Landmark 2025 Annual Medicaid MCO Survey
- IMI Presents to National Academies Committee on Understanding Breastfeeding Promotion, Initiation and Support
- Upcoming: IMI to present at Association of Community Affiliated Plans May 30th
- IMI Charts New Future with Board and Community Members at Annual Retreat
- Seeking Associate Director of Policy and Programs
- Get Your Medicaid Swag Now – Support IMI

Recent IMI Release

New Fact Sheet Summarizes Trends in Medicaid MCOs' Redeterminations



The Institute for Medicaid Innovation recently released the [final fact sheet](#) in its national Medicaid managed care organization (MCO) redetermination survey series. The fact sheet highlights the trends from four surveys conducted from May 2023 to February 2024.

The survey series, funded by the [Robert Wood Johnson Foundation](#), provides an in-depth view of health plans' responses to Medicaid redeterminations regarding risk mitigation, disenrollment, and outreach.

Among the findings, the high levels of disenrollment that Medicaid MCOs originally anticipated were potentially mitigated by outreach efforts. Check out the [fact sheet](#) for details.

Call to Action!

Help Inform IMI's Landmark 2025 Annual Medicaid MCO Survey

Each year, the Institute for Medicaid Innovation seeks feedback on our landmark Annual Medicaid Managed Care Organization (MCO) Survey. Entering our 8th year of the longitudinal survey, we are now accepting submissions for potential new questions, new answer options and edits to existing questions for every category of our upcoming 2025 survey. For reference, the 2024 survey instrument can be found [here](#).

The survey's existing categories of questions are:

- High-Risk Care Coordination
- Alternative and Value-Based Payment Models
- Pharmacy
- Behavioral Health
- Maternal and Perinatal Health
- Sexual and Reproductive Health
- Child and Adolescent Health
- Managed Long-Term Services and Supports
- Social Determinants of Health
- Health Equity
- Telehealth

[Submit](#) your suggestions or email your questions to MCOSurvey@MedicaidInnovation.org by June 15, 2024.

IMI Hits the Road

IMI Presents to National Academies Committee on Understanding Breastfeeding Promotion, Initiation and Support

Yontii Wheeler, MPH, program specialist and Jennifer Moore, PhD, RN, FAAN, founding executive director, presented on the "Economic Factors Influencing the Costs and Benefits of Breastfeeding – Initiatives and Impacts in Medicaid," at the National Academies' Committee on Understanding Breastfeeding Promotion, Initiation and Support Across the United States: An Analysis. Learn more about the [event and the presentation](#), which was held in Washington, DC on May 20.

Upcoming: IMI to present at Association of Community Affiliated Plans May 30th

The Institute for Medicaid Innovation's (IMI) founding executive director, Jennifer Moore, PhD, RN, FAAN, and director of operations and strategic business development, Anna Bonelli, MURP, will be providing an overview of key findings from IMI's 4th survey of MCOs in its series on redetermination, and the trend analysis from all four of the redetermination surveys at an upcoming meeting with Association of Community Affiliated Plans (ACAP) May 30th. Learn more about ACAP [here](#).

Recent IMI Event

IMI Charts New Future with Board and Community Members at Annual Retreat

The Institute for Medicaid Innovation (IMI) recently held its annual retreat for members of its governing board, national advisory board, and members of the community with lived experience.

During a day marked by innovative ideas and robust discussion, they talked about how best to form authentic partnerships with the community,

how to shape the new committees of the board dedicated to community members and health plan representatives, and brainstormed ways to chart a new future for IMI.



Join the IMI Team

Seeking Associate Director of Policy and Programs

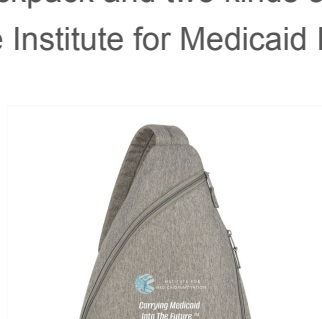
Are you passionate about improving the lives of Medicaid enrollees, their families, and communities?

We're currently seeking an entrepreneurial, creative and flexible Associate Director of Policy and Programs to help develop IMI's analytic and programmatic agenda. Learn more: [Associate Director of Policy and Programs](#)

Get Your Medicaid Swag Now – Support IMI!

Do you love Medicaid as much as we do? Are you looking for opportunities to show off your Medicaid pride? Is there someone you know who needs some Medicaid merch?

After years of receiving requests to create Medicaid merchandise, we have officially launched our [first online swag store](#), complete with a tote bag, a blanket, a sling backpack and two kinds of t-shirts. All proceeds support the Institute for Medicaid Innovation.



Through our research, policy, and community-led work, we drive Medicaid policy that provides both physical and behavioral health care for all. To do this important work, we're fully reliant on financial support from like-minded people and foundations.

Purchasing our merch and making a donation are two of the most powerful ways you can make a difference in the lives of children and families.

[Donate](#)

It's not the statistics that make Medicaid real.



It's when you love one of the numbers.

Did you receive this newsletter from a friend and want more? [Join our mailing list!](#)

Institute for Medicaid Innovation
1250 Connecticut Ave, NW, Suite 700
Washington, D.C. 20036

info@MedicaidInnovation.org



The Institute for Medicaid Innovation (IMI) is a 501(c)3 national nonprofit, nonpartisan research and policy organization focused on providing evidence of innovative solutions that address important clinical, research, and policy issues in Medicaid through multi-stakeholder engagement, research, data analysis, education, learning collaboratives, quality improvement initiatives, and dissemination and implementation activities. IMI is not a membership or trade association and is funded exclusively through research grants and contracts.