



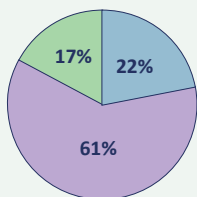
Annual Medicaid Managed Care Organization Survey Sexual and Reproductive Health

Demographics

In its seventh year, the 2024 survey findings represent health plan data from almost every state with Medicaid managed care. The annual survey collected information at the parent company/corporate levels and is intended to equip Medicaid stakeholders with the information needed to accurately articulate the national narrative about Medicaid managed care. The survey respondents are representative of the national demographics of all Medicaid health plans.

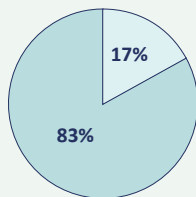
Health Plan Tax Status

- Private Nonprofit
- Private For-Profit
- Government or Other



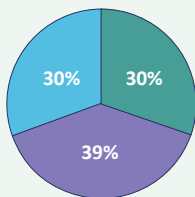
Health Plan Markets

- Single State
- Multistate



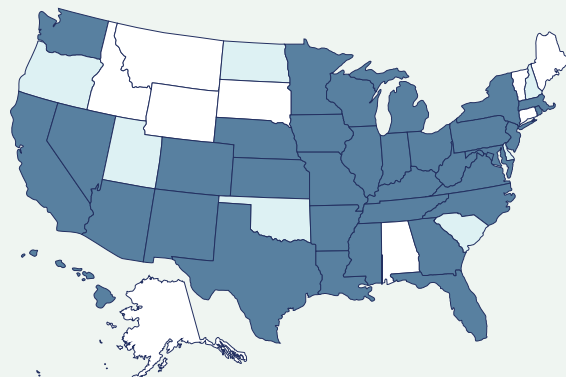
Health Plan Size

- Small Health Plans (<250K Covered)
- Medium Health Plans (250K–1 Million Covered)
- Large Health Plans (>1 Million Covered)



Note: Percentage does not equal 100% due to rounding.

Health Plan States



- Managed Care States Represented in Findings (states with capitated managed care)
- Managed Care States NOT Represented in Findings
- States without Medicaid Managed Care

Source: Institute for Medicaid Innovation. "2024 Annual Medicaid Health Plan Survey."

Gender-Affirming Services Medicaid Health Plans Cover for Transgender Youth and/or Adults

	Small Health Plans	Medium Health Plans	Large Health Plans	All Health Plans
Adult medical care (e.g., hormone therapy)	57%	78%	83%	73%
Adult surgery	57%	78%	83%	73%
Adult behavioral health (e.g., treatment for gender dysphoria or incongruence)	57%	44%	71%	57%
Adult mental health assessments needed for access to gender-affirming services	57%	56%	71%	61%
Youth behavioral health (e.g., treatment for gender dysphoria or incongruence)	14%	56%	71%	48%
Youth mental health assessments needed for access to gender-affirming services	14%	56%	71%	48%
Youth medical care (e.g., hormone therapy)	0%	78%	50%	46%
Youth surgery	0%	56%	33%	32%
Other*	14%	33%	29%	26%
It is not permitted by state agencies	43%	11%	0%	17%







Source: Institute for Medicaid Innovation. "2024 Annual Medicaid Health Plan Survey."

Notes: *Other includes behavioral health carve-out from physical health; surgical services for youth under 16 are not covered; treatments for youth 15 years or older if emancipated through marriage; behavioral health and mental health assessments for both youth and adults are covered by the behavioral health MCO; and all medically necessary procedures as informed by the World Professional Association for Transgender Health. Nine percent (9%) of health plans selected "none."



Support for this project is provided by the Robert Wood Johnson Foundation. The views expressed here do not necessarily reflect the views of the Foundation.








Medicaid Health Plans' Data Source(s) for Members' Gender Identity

78%	Members' self-reports collected by the health plan	
26%	State Medicaid enrollment files	
17%	Imputed from other data sources	
17%	Data feed from provider organizations or state health information exchanges	
13%	We do not receive this data from any source	
13%	Other*	

Source: Institute for Medicaid Innovation. "2024 Annual Medicaid Health Plan Survey."

Notes: *Other includes currently trying to get information from providers and through the member portal; electronic medical records. Four percent (4%) of health plans selected "our health plan's data system does not currently record gender identity separate from sex."

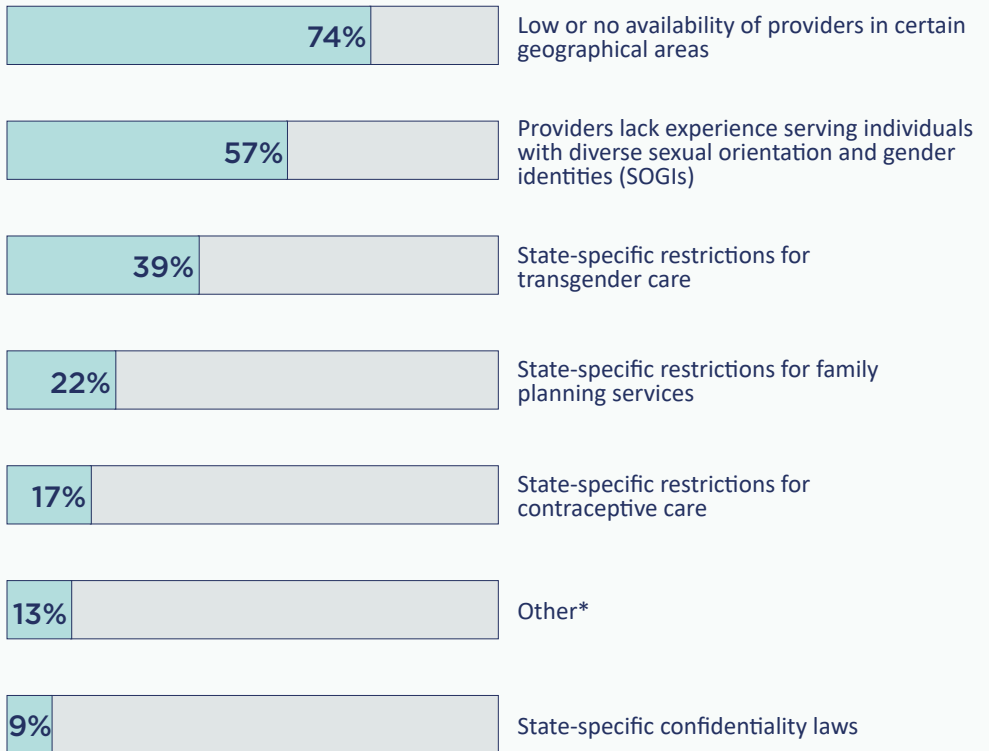
Medicaid Health Plans' Data Source(s) for Members' Sexual Orientation

83%	Members' self-report collected by the health plan	
17%	Imputed from other data sources	
17%	Data feed from provider organizations or state health information exchange	
17%	Other*	
13%	State Medicaid enrollment files	
13%	Our health plan's data system does not currently record sexual orientation	
4%	We do not receive this data from any source	

Source: Institute for Medicaid Innovation. "2024 Annual Medicaid Health Plan Survey."

Note: *Other includes currently trying to obtain from providers and through member portal so member can input; collect from vendor partners; members' self-report collected by the hospital system; EMR from clinical enterprise (integrated health delivery system).

Barriers Medicaid Health Plans Experience When Addressing the Sexual and Reproductive Health Needs of Members



Source: Institute for Medicaid Innovation. "2024 Annual Medicaid Health Plan Survey."

Notes: *Other includes state not sharing complete SOGI information; lack of provider data associated with serving individuals with diverse SOGIs. Thirteen percent (13%) of health plans selected "none."

Provider Settings Health Plans Contract with to Provide Sexual and Reproductive Health Care

Freestanding family planning providers	78%
Freestanding birth centers	57%
Planned Parenthood health centers	52%
Telehealth platforms	52%
Other*	4%

Source: Institute for Medicaid Innovation. "2024 Annual Medicaid Health Plan Survey."

Notes: *Other includes any Medicaid provider. Nine percent (9%) of health plans selected "none."

Barriers Medicaid Health Plans Experience Related to Sexual Orientation and Gender Identity Data

	Small Health Plans	Medium Health Plans	Large Health Plans	All Health Plans
Medicaid enrollment forms do not collect SOGI data	86%	67%	71%	74%
Health plan receives incomplete sexual orientation and gender identity (SOGI) data from state data files	43%	67%	86%	65%
Response options on forms are not comprehensive or inclusive of all identities	43%	56%	71%	57%
The software the health plan uses does not maintain or display SOGI data	57%	56%	43%	52%
Members express concern about sharing SOGI data	29%	67%	43%	48%
Health plan staff expresses concern with collecting SOGI data	14%	44%	43%	35%
Other*	0%	11%	14%	9%

Source: Institute for Medicaid Innovation. "2024 Annual Medicaid Health Plan Survey."

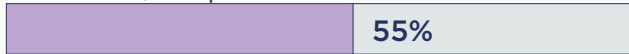
Notes: *Other includes state collecting SOGI data, but not sharing at this time; data is not standardized; lack of best practices on collecting SOGI data for minors; and not included in the state eligibility file. No health plans selected "we do not experience any barriers."

Data Points Health Plans Track Related to Sexual and Reproductive Health Care

Grievances from members who indicate not being able to access gender-affirming care



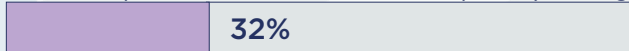
Grievances from members who indicate not being able to access LGBTQ+ competent care



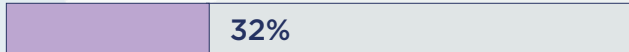
Number of providers who provide gender-affirming care



Number of providers who have LGBTQ+ competency training



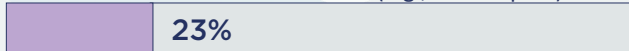
Grievances from members who indicate not being able to access an alternative birth center



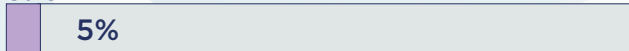
Grievances related to abortion access



Number of alternative birth centers (e.g., nonhospital)



Other*



Source: Institute for Medicaid Innovation. "2024 Annual Medicaid Health Plan Survey."

Notes: *Other includes grievances from members seeking to deliver their babies at home. Eighteen percent (18%) of health plans selected "none."

How State Medicaid Agencies Could Assist Health Plans in Addressing the Sexual and Reproductive Health Needs of Members

Improve data sharing between state and health plans	78%
Improve the quality of data shared between state and health plans	74%
Improve data sharing between health plans and provider groups	74%
Improve data sharing between government agencies (e.g., child welfare system, criminal justice system) and health plans	70%
Improve data sharing between health plans and community-based organizations (CBOs)	70%
Increase resources to support facilitation of partnerships	61%
Increase technical assistance resources	57%
Facilitate contracting with CBOs	57%
Remove coverage restrictions for reproductive health care	48%
Monitor network adequacy specific to related groups of services (e.g., measure network adequacy of reproductive health care providers)	48%
Advocate against legislation that restricts access to gender-affirming care	44%
Advocate against legislation that restricts access to abortion	30%

Source: Institute for Medicaid Innovation. "2024 Annual Medicaid Health Plan Survey."

Note: Nine percent (9%) of health plans selected "states cannot provide further assistance."

Contraceptive Quality Measures Health Plans Monitor

Contraceptive care—most and moderately effective methods	48%
Contraceptive care—postpartum most and moderately effective methods	44%
Contraceptive care—postpartum access to long-acting reversible contraception	44%
Contraceptive care—access to long-acting reversible contraception	39%
None	35%
Person-centered contraceptive counseling measures	17%

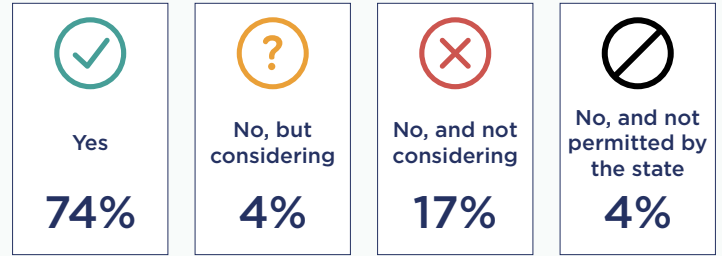
Source: Institute for Medicaid Innovation. “2024 Annual Medicaid Health Plan Survey.”

Barriers Health Plans Experience Related to Abortion Care

Not an allowable or covered benefit by state	39%
Lack of providers in geographic areas	26%
Restrictions on when abortion health care services can be provided	26%
None	26%
Provider confusion around state policies	17%
Age restrictions on consenting for abortion health care services	17%
Lack of clarity around state policies	13%
Providers no longer providing care due to fear of losing medical license	13%
Long wait time for members	9%
Wait time restrictions	9%

Source: Institute for Medicaid Innovation. “2024 Annual Medicaid Health Plan Survey.”

Health Plans that Cover Treatment of Perimenopause- and Menopause-Related Symptoms



Source: Institute for Medicaid Innovation. “2024 Annual Medicaid Health Plan Survey.”

How State Medicaid Agencies Could Further Assist Health Plans in Addressing Gender-Affirming Health Needs

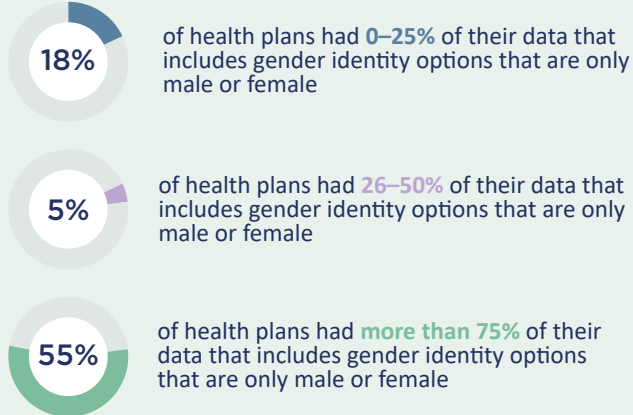
Facilitate sexual orientation and gender identity (SOGI) data sharing between health plans and providers	70%
Develop standards for health plans to collect SOGI data	70%
Partner with other existing community-based organizations (CBOs) and governmental entities to develop gender-affirming best practices for Medicaid operations	70%
Monitor network adequacy specific to related groups of services (e.g., measure network adequacy of gender-affirming health care providers)	61%
Provide gender-affirming care education for health care providers	61%
Provide gender-affirming care education for health plans	57%
Facilitate contracting with nontraditional medical practices (e.g., electrolysis providers, laser therapy) to increase access to services	52%
Require or allow health plans to cover gender-affirming health care	44%
Advocate against legislation that restricts access to gender-affirming care	44%
Establish guidelines and certification processes for qualified providers	44%
Other*	9%

Source: Institute for Medicaid Innovation. “2024 Annual Medicaid Health Plan Survey.”

Notes: *Other includes allow Medicaid managed care organizations to collect member self-reported SOGI data. Nine percent (9%) of health plans selected “states cannot provide assistance.”

Percent of Health Plans' Member Data that Includes Sexual Orientation and Gender Identity Options

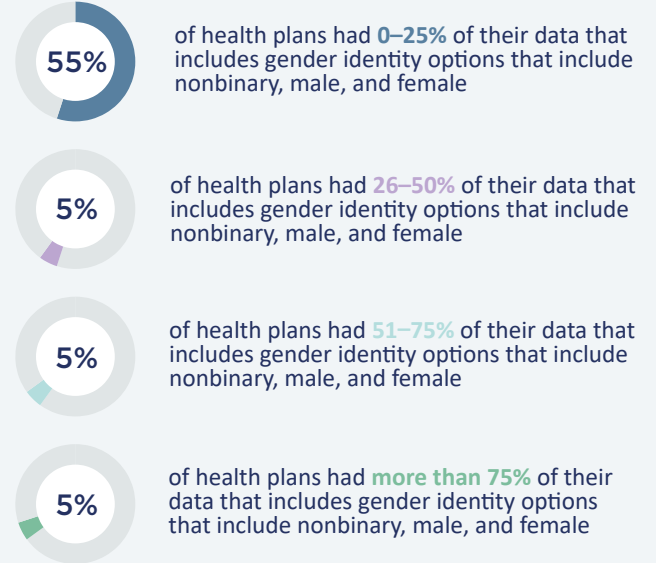
Only Male or Female



Source: Institute for Medicaid Innovation. "2024 Annual Medicaid Health Plan Survey."

Notes: Eighteen percent (18%) of health plans selected "unknown/unable to answer;" five percent (5%) of health plans selected "not applicable;" no health plan selected "51–75%." Totals may not equal 100 percent due to rounding.

Nonbinary, Male, and Female



Source: Institute for Medicaid Innovation. "2024 Annual Medicaid Health Plan Survey."

Notes: Twenty-three percent (23%) of health plans selected "unknown/unable to answer;" fourteen percent (14%) of health plans selected "not applicable." Totals may not equal 100 percent due to rounding.

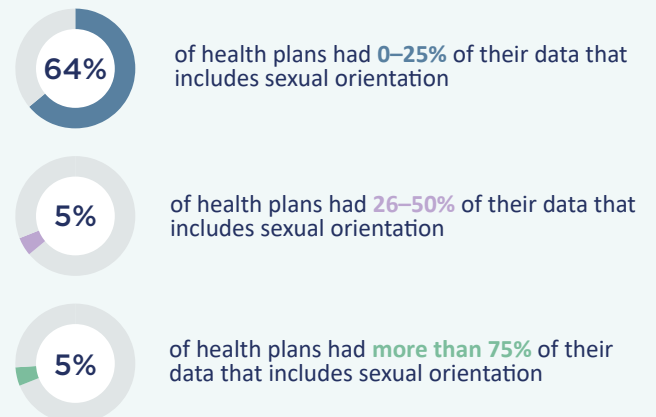
Gender Identity Reported Separately from Sex



Source: Institute for Medicaid Innovation. "2024 Annual Medicaid Health Plan Survey."

Notes: Eighteen percent (18%) of health plans selected "unknown/unable to answer;" fourteen percent (14%) of health plans selected "not applicable;" no health plan selected "26–50%" or "51–75%." Totals may not equal 100 percent due to rounding.

Sexual Orientation



Source: Institute for Medicaid Innovation. "2024 Annual Medicaid Health Plan Survey."

Notes: Fourteen percent (14%) of health plans selected "unknown/unable to answer;" fourteen percent (14%) of health plans selected "not applicable;" no health plan selected "51–75%." Totals may not equal 100 percent due to rounding.