



Welcome to the February Newsletter

Get the latest on the following topics:

- Annual Medicaid MCO Survey Instrument is Ready to be Completed
- Snapshot of Behavioral Health Data from 2024 Medicaid MCO Survey
- Staff Promotions: Yontii Wheeler, MPH and Rebecca Johnson, MA, MPH
- Opportunity: National Advisory Board Committee
- Opportunity: Guide the Development of the Annual Medicaid MCO Survey
- IMI on the Road
- End-of-Year Giving Campaign Update
- Check Out the IMI Swag Store
- IMI is Hiring

IMI's 8th Annual Medicaid MCO Survey Instrument is Ready!



2025 Annual Medicaid MCO Survey

You can complete this survey by:
• registering via our secure web-based platform, or
• filling out the PDF and emailing it to COI@www.medicicaidinnovation.org
Due date: March 14, 2025

The Institute for Medicaid Innovation (IMI)'s annual Medicaid managed care survey was developed, piloted, refined, and finalized in partnership with health plans, researchers, and policymakers. Its primary goal was to create a partnership with the information they needed to accurately evaluate the national marketplace around Medicaid managed care. The previous reports can be accessed at the IMI website. IMI uses a number of steps to safeguard the data collected from health plans. Only IMI research staff have access to the survey data, and all IMI staff have received extensive training in research ethics, data protection, confidentiality, and privacy. As with all IMI surveys, we aggregate the reported findings from the analysis as a composite to ensure the protection of health plan-level identifiable data. To variables with a small sample size, findings will not be reported. Finally, no findings are released without the review and approval of the IMI survey subcommittee and the data and research committee, comprised of Medicaid health plan representatives.

Section A. Contact Information

IMI staff will use the following information for the purpose of clarifying survey responses.

Name: _____
Title: _____
Email: _____
Phone: _____

Name of your health plan:

Please select the option that best represents your health plan.
 Parent organization
 Individual market

Proceed to the next page to complete section B.

www.MedicicaidInnovation.org

2025 Annual Medicaid MCO Survey | 1

The Annual Medicaid MCO Survey instrument is ready to be completed by Medicaid health plans, with responses due by **March 14th**. This survey provides key insights into trends, challenges, and innovations in Medicaid managed care, helping to inform policymakers, health plans, and stakeholders. Participating health plans will receive an individualized, benchmarked report comparing their responses against the aggregated, deidentified responses from health plans of similar size. You can [download the survey instrument here](#). Please contact us at MCOsurvey@medicaidinnovation.org with any questions.

Behavioral Health Snapshot from the 2024 Annual Medicaid MCO Survey

How Medicaid Health Plans Address Access Barriers for Child & Adolescent Behavioral Health Services

 Educate members to help destigmatize mental illness	73%	 Provide training to pediatricians on integrating behavioral health into their practice	40%
 Provide services in multiple languages	67%	 Incentivize members' parents/caregivers to engage with behavioral health services	33%
 Connect members to infrastructure to access virtual care	53%	 Provide coaches and peer support to expand available resources	33%
 Contract with more virtual behavioral health providers	40%	 Other*	20%
 Administer behavioral health services in schools	40%	 Provide behavioral health services in medical emergency rooms	7%

Source: Institute for Medicaid Innovation. "2024 Annual Medicaid Health Plan Survey."

Notes: *Other includes recruiting efforts, working with schools, peer support, hosting community events, provider training, and community health workers. No health plan selected "none."

This month, we are highlighting a key behavioral health data point from the 2024 Medicaid MCO Survey [fact sheet on behavioral health](#).

To enhance child and behavioral health care services, Medicaid health plans are educating members to destigmatize mental illness (73%) and providing services in multiple languages (67%). Fifty-three percent of respondents are also connecting child and adolescent members to care using virtual options. [Click here to review the complete fact sheet on behavioral health](#).

Congratulations to Yontii Wheeler, MPH and Rebecca Johnson, MA, MPH

Join us in congratulating Yontii Wheeler and Rebecca Johnson on their recent promotions!

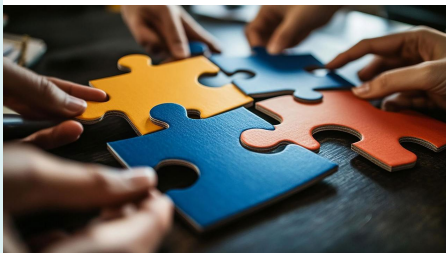
Yontii leads the three-year [Doula Learning and Action Collaborative](#) initiative. A former educator and current public health professional, Yontii helped conceptualize, and now leads, this multi-year effort that provides technical assistance to state-based teams engaged in expanding access to doula services for Medicaid enrollees. Yontii also co-directs IMI's summer internship program, which supports the development of the next generation of emerging leaders.

Rebecca leads several key initiatives across our maternal and perinatal health portfolio,

including work focused on expanding [midwifery access for Medicaid enrollees](#) and engaging thought leaders and change agents across a national maternal health Medicaid coalition. Rebecca also co-leads the development and implementation of learning activities for states participating in the [Transforming Maternal Health \(TMaH\) model](#).

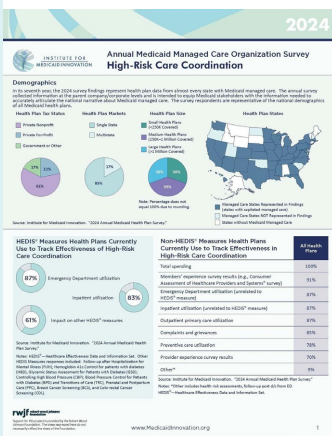
The IMI team and our partners are grateful for Yontii and Rebecca's dedicated service and leadership. Congratulations!

Opportunity: National Advisory Board Committee



IMI's National Advisory Board Medicaid health plans committee, chaired by Dr. Kim Bower, MD, FAAHPM, HMDC, is currently accepting new members. The committee provides health plans with the opportunity to guide, inform, and engage in IMI's innovative work. Please email Yontii Wheeler (YWheeler@MedicaidInnovation.org) by **February 21st** with any questions you may have or to express your interest to join this board level committee.

Opportunity: Guide the Development of the Annual Medicaid MCO Survey



IMI leads the annual Medicaid MCO survey focused on core areas of Medicaid in collaboration with health plans. The annual survey national advisory committee, chaired by Poppy Coleman, MPP, provides guidance and feedback on the project to ensure that the findings remain an important resource to inform policy decisions. Please email Sydney Berry (SBerry@MedicaidInnovation.org) by **February 21st** with any questions you may have or to express your interest in joining this project-based committee.

IMI on the Road

IMI's Founding Executive Director Jennifer Moore, PhD,



RN, FAAN, participated in the Financing Community Birthing Summit in New York City at the end of January, joining more than 50 philanthropic funders, private capital investors, and community leaders to explore the full spectrum of financing solutions to support and sustain community birthing care. Jennifer facilitated breakout sessions and moderated a panel on topics such as birth centers, midwifery-led and doula-supported care, and ways to support community-based care.

Jennifer Moore, PhD, RN, FAAN, also joined the Association of Community Affiliated Plans (ACAP) Leadership Academy on February 13th in Washington, D.C. to present on the findings from the Annual Medicaid MCO survey. ACAP is a nonpartisan trade association representing not-for-profit safety net health plans. The Leadership Academy is a one-year program that focuses on Medicaid policy and financing, health plan operations, leadership development, and shared learning and networking.

Thank You for Supporting the End-of-Year Giving Campaign!

We have a lot to look forward to in 2025, and we are so grateful to everyone who supported our 2024 end-of-year giving campaign. We continue to be awed by the level of commitment and generosity of our community. Thank you all! Your support will allow IMI to continue its mission critical work. We are preparing for a big year of milestones: Medicaid's 60th anniversary and IMI's 10th year of impact. Thanks to your generosity, we'll continue to extend Medicaid's reach, advance equity, and promote innovation for millions of people insured by Medicaid across the country.

For those who have not done so already, it's not too late to make a [tax-deductible donation](#) in support of IMI's future. Thank you!

Check Out the IMI Swag Store



[IMI swag](#) is the perfect gift for the people in your life who love health policy, detailed research, and national programs that support our entire community. Our online store has everything you're looking for: T-shirts, bags, blankets, and more. Even better, your purchase will support IMI's work and make a difference in the lives of the families we serve.

Are You IMI's Next Hire?



We are currently hiring IMI's first program assistant, reporting to the deputy director, to support strategic programmatic efforts. This early career person will work closely with our senior leaders and program staff to expand IMI's strategic initiatives and grant-funded projects. To learn more, [review the position description](#). Applications will be accepted on an ongoing basis.

IMI is also hiring an associate director of strategic programs to lead the analytic and programmatic agenda related to Medicaid, managed care, and our priority topic areas: perinatal health, youth behavioral health, and community-based models of high-quality, high-value health care. To learn more, [review the position description](#). Applications will be accepted on an ongoing basis.

Donate

It's not the statistics that make Medicaid real.



It's when you ♥ one of the numbers.

Did you receive this newsletter from a friend and want more? [Join our mailing list!](#)

Institute for Medicaid Innovation
1250 Connecticut Ave, NW, Suite 700, PMB 5135
Washington, D.C. 20036

info@MedicaidInnovation.org



The Institute for Medicaid Innovation (IMI) is a 501(c)3 national nonprofit, nonpartisan research and policy organization focused on providing evidence of innovative solutions that address important clinical, research, and policy issues in Medicaid through multi-stakeholder engagement, research, data analysis, education, learning collaboratives, quality improvement initiatives, and dissemination and implementation activities. IMI is not a membership or trade association and is funded exclusively through research grants and contracts.

[Manage](#) your preferences | [Opt Out](#) using TrueRemove™

Got this as a forward? [Sign up](#) to receive our future emails.

View this email [online](#).

1250 Connecticut Avenue Suite 700 | Washington, DC 20036 US

This email was sent to comms@medicaidinnovation.org.
To continue receiving our emails, add us to your address book.

emma®