



INSTITUTE FOR
MEDICAID INNOVATION

Welcome to the April Newsletter

Get the latest on the following topics:

- Seeking Youth Representatives to Join IMI Governing Board
- National Strategic Medicaid Maternal Health Coalition Launches
- New Gender Affirming Care Resources for Medicaid Health Plans
- April 28th Webinar Features IMI Board Member Gail Graham
- National Webinar Series: Care Transformation to Address Inequities
- IMI on the Road: 2025 Indigenous Birth Conference
- IMI Staff Member Promoted to Deputy Director
- Join the IMI Team as Associate Director, Strategic Programs
- Ask Me About Medicaid: IMI Swag Store is Open

Seeking Youth Representatives to Join IMI Governing Board



Are you or someone you know between the ages of 18 and 25? Your voice matters - Become a Youth Board Member! Are you passionate about making a difference in your community? If you care about improving the lives of those with Medicaid insurance, their families, and communities we want to hear from you! Use your voice and real-life experience to contribute to the work that we do at IMI. Learn more [here](#). Nominate someone or [apply](#) to become a youth member of IMI's Governing Board and be a part of driving meaningful change!

The National Strategic Medicaid Maternal Health Coalition Launches!

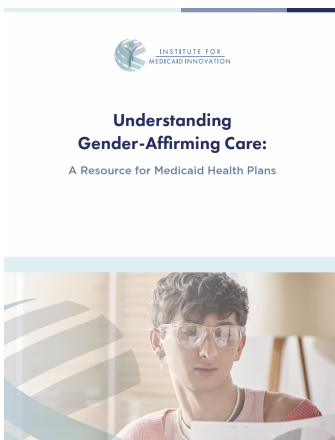


On April 16th, we officially kicked off the National Strategic Medicaid Maternal Health Coalition. With support

from the Robert Wood Johnson Foundation and Merck for Mothers, the Institute for Medicaid Innovation and Elephant Circle teams are co-facilitating and supporting this coalition. The effort is structured around key elements and activities designed to address systemic barriers, enhance care delivery, build community power, share learnings, and foster collaboration.

The coalition will advance the [Five Big Ideas](#) that emerged from our [Maternal Health Equity Policy Summit](#).

IMI Releases Gender Affirming Care Resources for Medicaid Health Plans



Medicaid health plans have substantial influence and responsibility in the crucial task of providing, orchestrating, and optimizing gender-affirming care for people who may otherwise experience significant barriers to appropriate health care.

IMI has released [two new resources](#), a guide and a toolkit, to support Medicaid health plans in implementing best practices, while being cost effective.

IMI Board Member Elevates Best Practices in Patient Engagement



IMI Board Member [Gail Graham](#) will serve as a panelist during the upcoming webinar "Empowering Patient Voices with Lived Experience" on Monday April 28th from 12:00pm-1:30pm ET. Presenters will explore how health care systems and advocacy efforts can center the real-world experiences of patients, especially Black patients, to shape more effective, equitable care. Gail and fellow panelists, Drs. Mullins and Gee of the [PATIENTS Program](#), will share insights, followed by an open discussion on best practices, persistent challenges, and collaborative strategies. [Register here!](#)

National Webinar Series: Care Transformation to Address Inequities



As part of the Advancing Health Equity (AHE) initiative funded by the Robert Wood Johnson Foundation, IMI's Program Manager Yontii Wheeler, MPH, co-facilitated a national webinar series focused on strategies for planning and implementing care transformations that address the root causes of health and health care inequities. Panelists from the learning collaborative state teams discussed specific examples from their multi-year efforts.

To access recordings and slides from the national webinar series, click [here](#).

IMI on the Road

IMI's Dr. Jennifer Moore and Rebecca Johnson will facilitate an interactive Medicaid 101 session with Elephant Circle's Indra Lusero at the [2025 Indigenous Birth Conference](#) in Tempe, Arizona on May 3rd. The conference provides a space for learning, healing, connecting, and the preservation of Indigenous midwifery and birth traditions.

[Over one million Indigenous people in the U.S. use Medicaid or the Children's Health Insurance Program \(CHIP\) for their health insurance.](#) Within Medicaid, there are special eligibility protections for American Indians and Alaska Natives as well as requirements for government consultation with tribes. Medicaid is a powerful program to use to advance health care transformation goals within Indigenous communities.

This session will cover foundational elements of Medicaid and its relationship to the Indian Health Service (IHS) with the aim of increasing attendees' confidence in applying this knowledge to improve the health of women, birthing people, and families in their communities.

Congratulations to Jordana Frost, DrPH!

Join us in congratulating Dr. Jordana Frost on her recent promotion to deputy director!

In addition to overseeing IMI's programmatic portfolio and contributing to a thriving workplace culture, Dr. Frost will be leading the organization's strategic initiatives and business development functions. Together with founding executive director, Dr. Jennifer Moore and our communications, development, and operations colleagues, Dr. Frost will lead activities aimed at growing IMI's reach, building synergy across key programs, and helping to lay the foundation for IMI's next ten years of sustained impact and growth!

The IMI team, governing board, and partners are grateful for Dr. Frost's leadership in service to our shared mission of improving the lives of those with Medicaid insurance coverage. Congratulations!

Join the IMI Team!



IMI is hiring an associate director of strategic programs to lead the analytic and programmatic portfolio of work centered around our priority topic areas of perinatal health, youth behavioral health, risk adjustment, value of Medicaid, and community-based models of high-quality, high-value health care. To learn more, [review the position description](#). Applications will be accepted on an ongoing basis.

Check Out the IMI Swag Store



[IMI swag](#) is the perfect gift for the people in your life who love health policy, detailed research, and national programs that support our entire community. Our online store has everything you're looking for: T-shirts, bags, blankets, and more. Even better, your purchase will support IMI's work and make a difference in the lives of the families and partners we serve.

[Donate](#)

It's not the statistics that make Medicaid real.



It's when you love one of the numbers.

Did you receive this newsletter from a friend and want more? [Join our mailing list!](#)

Institute for Medicaid Innovation
1250 Connecticut Ave, NW, Suite 700, PMB 5135
Washington, D.C. 20036

info@MedicaidInnovation.org



The Institute for Medicaid Innovation (IMI) is a 501(c)3 national nonprofit, nonpartisan research and policy organization focused on providing evidence of innovative solutions that address important clinical, research, and policy issues in Medicaid through multi-stakeholder engagement, research, data analysis, education, learning collaboratives, quality improvement initiatives, and dissemination and implementation activities. IMI is not a membership or trade association and is funded exclusively through research grants and contracts.

[Manage](#) your preferences | [Opt Out](#) using TrueRemove™

Got this as a forward? [Sign up](#) to receive our future emails.

View this email [online](#).

1250 Connecticut Avenue, NW Suite 700 PMB 5135 | Washington, DC 20036 US

This email was sent to .

To continue receiving our emails, add us to your address book.

emma®

[Subscribe](#) to our email list.