



## Welcome to the February Newsletter

### Get the latest on the following topics:

- Five Big Ideas for Improving Maternal Health Released in New Report
- Third Redetermination Survey Results Now Available
- Social Determinants of Health Analyzed in Medicaid Risk Adjustment
- Fourth Redetermination Survey Available for Medicaid Health Plans
- Mark Your Calendars: Complete this Year's Annual Medicaid MCO Survey

## New IMI Releases

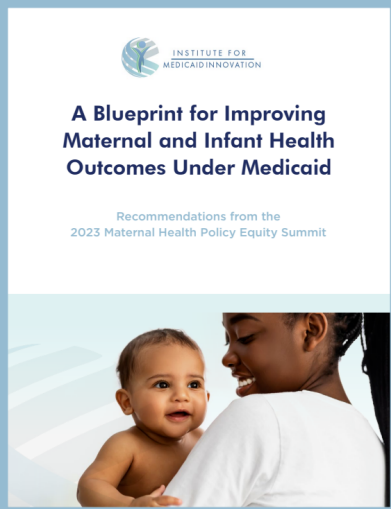
### Five Big Ideas for Improving Maternal Health Released in New Report

Medicaid experts and thought leaders from across the nation lend their insights to [a new IMI report](#), which puts forth Five Big Ideas for Improving Maternal Health.

Rooted in health equity and evidenced-based models of care, the plan represents a bold, consensus-driven path to reverse the maternal health crisis and improve lives for birthing persons and babies across the nation.

The findings are the result of the Maternal Health Policy Equity Summit, a convening of Medicaid thought leaders and change agents including those with lived experience with the program and community-based organizations.

Check out video highlights from the summit [here!](#)



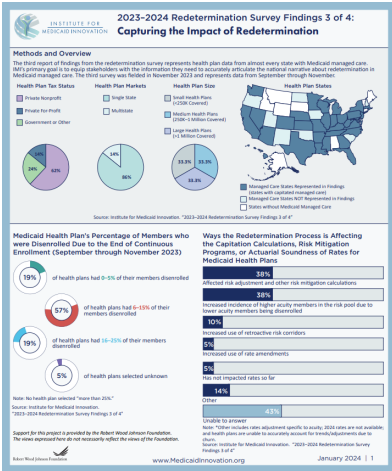
### Third Redetermination Survey Results Now Available

The next round of findings from the latest Medicaid health plan redetermination survey is now available.

Now in its third iteration, the survey shows changes in health plan's responses regarding risk mitigation, disenrollment, and reinstatements.

The survey, fielded with support from [the Robert Wood Johnson Foundation](#), provides insight on the evolution of barriers, challenges, and successes health plans are experiencing related to the redetermination process.

Access latest results [here](#).



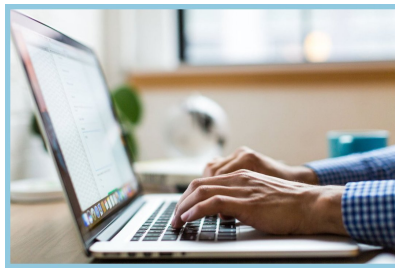
### Social Determinants of Health Analyzed in Medicaid Risk Adjustment

[New research](#) analyzes the inclusion of social determinants of health (SDOH) into the Chronic Illness and Disability Payment System (CDPS) risk adjustment in Medicaid model.

The research builds on [recent work](#) completed by IMI and the University of California, San Diego, updating the Medicaid risk adjustment system. A webinar detailing research—the first major update to CDPS in more than ten years—is available [here](#).



## Get Involved



### Fourth Redetermination Survey Available for Medicaid Health Plans

With support from the [Robert Wood Johnson Foundation](#), IMI is launching the last phase of our national Medicaid health plan redetermination survey. The results provide insight on the evolution of barriers, challenges, and successes health plans are experiencing related to redetermination and unwinding.

The fourth edition of the brief, 15-minute survey is available for Medicaid health plans to fill out [online](#) or via [PDF](#). If you have questions, please address them to [MCOSurvey@MedicaidInnovation.org](mailto:MCOSurvey@MedicaidInnovation.org).

### Mark Your Calendars: Complete this Year's Annual Medicaid MCO Survey

On February 14, IMI will release the seventh iteration of our signature, annual Medicaid MCO survey.

The one-of-kind, national survey, funded by the [Robert Wood Johnson Foundation](#), provides longitudinal insights into emerging trends and best practices among Medicaid health plans. We are looking forward to your participation!



It's not the statistics that make Medicaid real.



It's when you love one of the numbers.

Did you receive this newsletter from a friend and want more? [Join our mailing list!](#)

Institute for Medicaid Innovation  
1250 Connecticut Ave, NW, Suite 700  
Washington, D.C. 20036

[info@MedicaidInnovation.org](mailto:info@MedicaidInnovation.org)



*The Institute for Medicaid Innovation (IMI) is a 501(c)3 national nonprofit, nonpartisan research and policy organization focused on providing evidence of innovative solutions that address important clinical, research, and policy issues in Medicaid through multi-stakeholder engagement, research, data analysis, education, learning collaboratives, quality improvement initiatives, and dissemination and implementation activities. IMI is not a membership or trade association and is funded exclusively through research grants and contracts.*

[Manage](#) your preferences | [Opt Out](#) using TrueRemove™

Got this as a forward? [Sign up](#) to receive our future emails.

View this email [online](#).

P.O. Box 40619 | Washington, DC 20016 US

This email was sent to .

To continue receiving our emails, add us to your address book.

emma®

[Subscribe](#) to our email list.