



INSTITUTE FOR  
MEDICAID INNOVATION

## Welcome to the March Newsletter

Get the latest on the following topics:

- Medicaid Champions Honored at IMI's 10th Anniversary Event
- IMI Governing Board Elects New Chair
- Apply to Join the Midwifery Policy Collective!
- IMI on the Road: Sharing Medicaid Knowledge Across the Country
- Become an IMI Volunteer: Complete the Volunteer Interest Survey!
- Ask Me About Medicaid: IMI Swag Store is Open

## Medicaid Champions Honored During IMI's 10th Anniversary Celebration



The Institute for Medicaid Innovation recently honored six Medicaid champions and trailblazers during IMI's 10th Anniversary Celebration held on the Potomac River in Washington, DC. The honorees were recognized for their contributions to the field, their innovative approaches to improving coverage and services for people with Medicaid insurance coverage, and/or their volunteer service and leadership in support of IMI's mission:

- Judith Chamberlain, MD, FAAFP - Founder's Award
- Association of Community Affiliated Plans (ACAP) - Partners in Medicaid Award
- Birth Detroit - Community Trailblazer Award
- UPMC *For You* - Innovation in Medicaid Award
- UnitedHealthcare Community & State - Innovation in Medicaid Award
- Sandy Hassink, MD, MS, FAAP - Volunteer Leader Award

Stay tuned to learn more about each of these awardees in upcoming IMI newsletter issues!

## IMI Governing Board Welcomes Karen Dale as New Chair



The IMI governing board announced that [Karen Dale, MSN, RN](#) has been elected to serve as its new chair. Karen has been with the Institute for Medicaid Innovation from the very beginning of this journey. It is only fitting for us to embark on our next chapter together, guided by Karen's philosophy that all persons deserve access to the right care, without barriers, starting where they are.

As market president for AmeriHealth Caritas DC, one of the largest Medicaid managed care organizations in Washington, DC, Karen leads initiatives that strategically position the organization as a market leader with innovative solutions for the critical challenges faced by its members.

We are grateful for Karen's steady leadership and continued service to IMI!

**Apply to Join the Midwifery Policy Collective!**



## □New Opportunity!□

Up to 10 state-based groups will be selected to receive funding and technical support intended to [advance community-based midwifery policies](#). The three-step process for consideration includes 1) eligibility survey accepted on a rolling basis thru April 17th, 2) application form due no later than April 27th, and 3) interview in May, if selected to advance in the process.

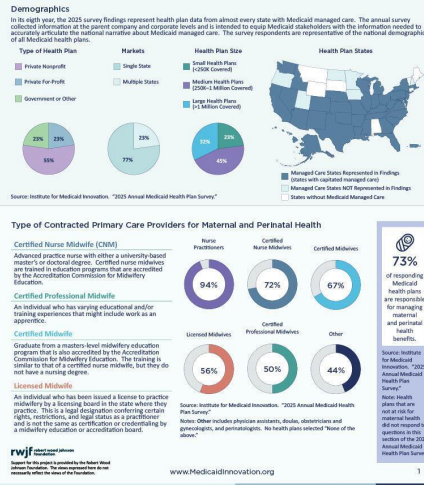
The Institute for Medicaid Innovation (IMI) is proud to co-lead this initiative along with [Elephant Circle](#), and in partnership with the following organizations: [American Association of Birth Centers](#), [Birth Center Equity](#), [Birth Place Lab](#), [National Association for the Advancement of Black Birth](#), [National Association of Certified Professional Midwives](#), and [Pritzker Children's Initiative](#).

To **learn more** about this [opportunity](#) and [apply](#) to join the Midwifery Policy Collective, click [here](#).

# IMI on the Road: Sharing Medicaid Knowledge Across the Country



## Annual Medicaid Managed Care Organization Survey Maternal and Perinatal Health



In October, IMI's founding executive director [Dr. Jennifer Moore](#), delivered opening remarks during the [National Maternal Health Symposium](#) organized by Healthy Birth Day, Inc., the nonprofit organization behind the Count the Kicks stillbirth prevention program.

Also in October, Dr. Moore presented during multiple sessions at [The Council of State Governments](#), including during a panel discussion with [KFF](#), [National Association of Medicaid Directors](#), and [Center for Budget and Policy Priorities](#).

In February, Dr. Moore shared highlights from IMI's 2025 annual Medicaid Managed Care Survey at the [Association for Community Affiliated Plans \(ACAP\) 2026 Leadership Academy Kick-Off Meeting](#). The [annual MCO survey](#) represents a sweeping body of work that equips Medicaid decision makers and others with the information they need to ensure the viability of the nation's Medicaid program.

# Become an IMI Volunteer: Share Your Interests and Expertise!



IMI's work is fueled by partners like you, who are passionate about improving the lives of people with Medicaid insurance. Will you consider sharing your experience, interest, and expertise to help advance [our shared goals](#),

[mission, and vision?](#)

We are recruiting volunteers from different Medicaid perspectives to join IMI and provide valuable insights, guidance, and ideas. If interested, please complete this [brief survey](#) to let us know how you might be a good match for one or more of our key initiatives, and volunteer committees!

## Check Out the IMI Swag Store



[IMI swag](#) is the perfect gift for the people in your life who love health policy, detailed research, and national programs that support our entire community. Our online store has everything you're looking for: T-shirts, bags, blankets, and more. Even better, your purchase will support IMI's work and make a difference in the lives of the families and partners we serve.

[Donate](#)

**It's not the statistics that make Medicaid real.**



**It's when you ♥love one of the numbers.**

Did you receive this newsletter from a friend and want more? [Join our mailing list!](#)

Institute for Medicaid Innovation  
1250 Connecticut Ave, NW, Suite 700  
Washington, D.C. 20036

[info@MedicaidInnovation.org](mailto:info@MedicaidInnovation.org)



*The Institute for Medicaid Innovation (IMI) is a 501(c)3 national nonprofit, nonpartisan research and policy organization focused on providing evidence of innovative solutions that address important clinical, research, and policy issues in Medicaid through multi-stakeholder engagement, research, data analysis, education, learning collaboratives, quality improvement initiatives, and dissemination and implementation activities. IMI is not a membership or trade association and is funded exclusively through research grants and contracts.*

[Manage](#) your preferences | [Opt Out](#) using TrueRemove™

Got this as a forward? [Sign up](#) to receive our future emails.

View this email [online](#).

1250 Connecticut Avenue, NW Suite 700 PMB 5135 | Washington, DC 20036 US

This email was sent to .

*To continue receiving our emails, add us to your address book.*

emma®

[Subscribe](#) to our email list.